

# Precinct 701

## Commonwealth of Virginia Sample Ballot

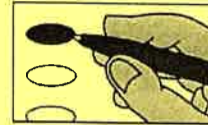
County of Prince Edward  
General and Special Elections  
Tuesday, November 5, 2019

### Instructions:

To vote for a candidate, use a black ballpoint pen to fill in the oval next to the name.

To write in the name of a person who is not already on the ballot, fill in the oval and print that person's name on the line provided.

If you want to change a vote or have made a mistake, ask for another ballot.  
If you make marks besides filling the oval, your votes may not count.



#### Member Senate of Virginia 22nd District Vote for only one

- Mark J. Peake - R
- Dakota S. Clayton - D
- \_\_\_\_\_  
Write-in

#### Member School Board District 7

For unexpired term to end  
December 31, 2021  
Vote for only one

- James Carl "Jim" Dumminger
- \_\_\_\_\_  
Write-in

#### Member House of Delegates 60th District Vote for only one

- James E. Edwards II - R
- Janie S. Zimmerman - D
- \_\_\_\_\_  
Write-in

#### Soil and Water Conservation Director Piedmont District Vote for not more than two

- William B. "Bill" Powers
- Wilkie W. Chaffin
- \_\_\_\_\_  
Write-in
- \_\_\_\_\_  
Write-in

#### Commonwealth's Attorney Vote for only one

- Megan L. Clark
- \_\_\_\_\_  
Write-in

#### Sheriff Vote for only one

- Wesley W. Reed
- L. A. "Tony" Epps
- \_\_\_\_\_  
Write-in

#### Commissioner of Revenue Vote for only one

- Edna Trent Goldman
- \_\_\_\_\_  
Write-in

#### Treasurer Vote for only one

- Donna Bowman Nunnally
- \_\_\_\_\_  
Write-in

Authorized by the Electoral Board of the  
County of Prince Edward

124 N. Main Street, 2nd Floor, Farmville, VA 23901  
The authority statement printed above must be removed and replaced with the appropriate authority statement for the candidate, committee, individual or group using this ballot for their own purposes. The authority statement used for this ballot must comply with the requirements of either federal or state law, as appropriate. For state requirements, see §24.2-955 et seq. of the Code of Virginia. For federal requirements, call the Federal Election Commission, 1-800-424-9530.

Ballot Style # 006

Typ:01 Seq:0006 Spl:01