



BOARD OF SUPERVISORS MEETING

ADDENDUM PACKET

June 8, 2010

<u>Item #</u>		<u>Page #</u>
27.	<u>Consent Agenda:</u> a. Addendum Bill List	189
28.	Resolution of Respect: Dr. Patricia P. Cormier	205
29.	Amendment to County Health Insurance Program – Supplemental Information	207
30.	Water Project Update	209
31.	<u>County Administrator's Report:</u> Supplemental Information	219
	a. Authorization to Drawdown County Line of Credit	219
	b. Wiley & Wilson Task Order	220
32.	<u>Upcoming:</u> <i>Ribbon Cutting at Lib's Place</i> 23147 Prince Edward Highway, Rice Saturday, June 12, 2010 at 10:00 a.m.	225
	<i>VICFA "On the Farm" Day -- Shepherds Knoll Farm</i> 248 Pisgah Church Road, Rice Sunday, June 20, 2010, 1:00 – 5:00	227
33.	<u>Informational:</u> a. Virginia Town & City Article, <i>Public Private Partnerships</i>	229
34.	<u>Monthly Reports:</u> a. Prince Edward County Public Schools	237



County of Prince Edward
Board of Supervisors
Agenda Summary

Meeting Date: June 8, 2010
Item No.: 27-a
Department: County Administration
Staff Contact: Barbara Poulston
Issue: Consent Agenda - Review of Accounts & Claims - ADDENDUM

Summary: The addendum bill list for May 2010 is attached for your review.

Attachments: Addendum Bill List

Recommendation: None.

Motion _____
Second _____

Campbell _____
Jones _____
Wilck _____

Fore _____
McKay _____
Wiley _____

Gantt _____
Simpson _____

6/04/2010

FROM DATE- 6/02/2010
TO DATE- 6/02/2010

ACCOUNTS PAYABLE CHECKS
PRINCE EDWARD

FUND NO.	DESCRIPTION	\$\$\$ PAY \$\$\$
100	GENERAL FUND	\$189,403.49
501	WATER FUND	\$122,091.00
732	RETIREMENT BENEFIT FUND	\$1,038.00
741	PIEDMONT COURT SERVICES FUND	\$3,237.65
	TOTAL	315,770.14

AP375H
6/04/2010
FUND # - 100 GENERAL FUND

PRINCE EDWARD
LISTING OF INVOICES FOR 6/02/2010 -- 6/02/2010

BEFORE CHECKS
PAGE 1

MAJOR#	VENDOR NUMBER	VENDOR NAME	INV#	DESCRIPTION	ACCOUNT TOTAL	MAJOR TOTAL
000200	LIABILITIES					
1002	31564	Sales Tax Collected/Payab VA DEPT OF TAXATION	MAY 2010	STATE SALES TAX	1.40	1.40 *
011010	BOARD OF SUPERVISORS				1.40	1.40 **
3131	10890	Wall of Military Honor	847	TENT & CHAIR RENTAL	177.00	
	15380	AWESOME PARTY SUPPLIES & FARMVILLE PRINTING	CO ADMR 510	MEMORIAL POSTCARDS	57.10	
	28421	SIMMONS L E MONUMENT CO	MEMORIAL MONUMNT	WAR MEMORIAL MONUMNT	6,145.00	
3600	15240	Advertising	CO ADMR 510	ADVERTISING	6,379.10	*
5530	32131	Travel-Subsistence & Lodg WAL-MART COMMUNITY	2238 CO ADM 510	SOFT DRINKS & WATER	1,014.00	*
012110	COUNTY ADMINISTRATOR				59.98	59.98 *
5230	10105	Telecommunications	392 8837 510	PHONE	1,014.00	*
	22489	AT&T	PECOUNTY 510	MONTHLY SERVICE	240.64	
	22489	MOONSTAR BBS	PECOUNTY 510	DSL	16.67	
	28711	MOONSTAR BBS	392 8837 510	PHONE	95.00	
		CENTURYLINK			493.09	
5810	31423	Dues & Association Member VA ASSOC OF COUNTIES*	IVC0603079	10-11 DUES	845.40	*
6001	13369	Office Supplies	11393100 510	WATER & EQUIP RENTAL	4,731.00	*
	20600	DIAMOND SPRINGS	SH421-3	CREDIT	4,731.00	*
	20600	KEY OFFICE SUPPLY	377401	ENVELOPES	15.70	
	20600	KEY OFFICE SUPPLY	377755	COPIER PAPER	14.99-	
	20600	KEY OFFICE SUPPLY	377756	COPIER PAPER	26.98	
	20600	KEY OFFICE SUPPLY	377911	INK CARTRIDGES	164.95	
	20600	KEY OFFICE SUPPLY	378162	BINDERS	140.97	
	20600	KEY OFFICE SUPPLY	378563	STAPLES	191.97	
6012	22210	Books and Subscriptions MATTHEW BENDER & CO INC	2519356	CODE RULES 2010 RV11	40.14	
012310	COMMISSIONER OF REVENUE				4.15	569.87 *
5230	13325	Telecommunications	T220935	ONLINE SERVICE	47.71	
		TREASURER OF VIRGINIA			47.71	*
					6,193.98	**

MAJOR# ACCT#	VENDOR NUMBER NAME	INV#	DESCRIPTION	AMOUNT
6001	Office Supplies			
	22058 M&W PRINTERS INC	64833	RE/PERSNL PRTY BOOKS	1,375.00
				1,375.00 *
			ACCOUNT TOTAL	1,752.08 **
012410	TREASURER			
3320	Maintenance Service Contr			
	20600 KEY OFFICE SUPPLY	378025	FAX SERVICE CONTRACT	171.00
				171.00 *
5230	Telecommunications			
	13325 TREASURER OF VIRGINIA	T220935	ONLINE SERVICE	125.38
	22489 MOONSTAR BBS	PECOUNTY 510	MONTHLY SERVICE	16.66
	28711 CENTURYLINK	392 3454 510	PHONE	237.08
			ACCOUNT TOTAL	379.12 *
5810	Dues & Association Member			
	11015 BAI TREASURERS USER GROUP	10-11	DUES	400.00
				400.00 *
6001	Office Supplies			
	11902 BUSINESS DATA OF VA, INC.	20100167	PRINTER CABLE	34.95
	15380 FARMVILLE PRINTING	TREAS 510	WINDOW ENVELOPES	676.28
	20600 KEY OFFICE SUPPLY	377359	INK CARTRIDGES	156.98
	20600 KEY OFFICE SUPPLY	377362	ADDING MACHINE TAPE	40.00
	20600 KEY OFFICE SUPPLY	377372	INK CARTRIDGE	74.99
	20600 KEY OFFICE SUPPLY	377814	INDEX TABS	4.20
	20600 KEY OFFICE SUPPLY	377920	PAPER CLIPS	1.90
			ACCOUNT TOTAL	989.30 *
6040	ADP Equipment			
	20600 KEY OFFICE SUPPLY	377605	DATA TAPES	949.95
				949.95 *
			ACCOUNT TOTAL	2,889.37 **
012510	INFORMATION TECHNOLOGY			
3160	Professional Services			
	11902 BUSINESS DATA OF VA, INC.	20100149	TRAVEL EXPENSE	125.00
	11902 BUSINESS DATA OF VA, INC.	20100159	TRAVEL EXPENSE	125.00
	11902 BUSINESS DATA OF VA, INC.	20100166	TRAVEL EXPENSE	125.00
	11902 BUSINESS DATA OF VA, INC.	20100174	TRAVEL EXPENSE	125.00
	11902 BUSINESS DATA OF VA, INC.	20100180	MONTHLY CONTRACT	2,800.00
			ACCOUNT TOTAL	3,300.00 *
3320	Maintenance Service			
	12762 COMPUTERPLUS SALES/SERVIC	MC0000152945	MAINTENANCE CONTRACT	270.00
				270.00 *
			ACCOUNT TOTAL	3,570.00 **

AP375H
6/04/2010
FUND # - 100 GENERAL FUND

PRINCE EDWARD
LISTING OF INVOICES FOR 6/02/2010 -- 6/02/2010

BEFORE CHECKS
PAGE 3

MAJOR# ACCT# 013200 REGISTRAR	VENDOR NUMBER NAME	INV#	DESCRIPTION	AMOUNT
5210	Postal Services 11406 BOLT DALE L 30550 U S POSTAL SERVICE	EXPENSES 510 POSTAGE 510	POSTAGE POSTAGE	26.40 88.00 114.40 *
5230	Telecommunications 10105 AT&T 13325 TREASURER OF VIRGINIA 28711 CENTURYLINK	392 4767 510 T220935 392 4767 510	PHONE ONLINE SERVICE PHONE	50.87 3.25 162.97 217.09 *
5510	Travel-Mileage 11406 BOLT DALE L	EXPENSES 510	MILEAGE	16.00 16.00 * 347.49 **
021100	CIRCUIT COURT			
5230	Telecommunications 28711 CENTURYLINK	392 5171 510	PHONE	175.63 175.63 *
6001	Office Supplies 20600 KEY OFFICE SUPPLY	378269	INK CARTRIDGES	64.98 64.98 * 240.61 **
021200	GENERAL DISTRICT COURT			
3320	Maintenance Service Contr 20600 KEY OFFICE SUPPLY	377832	COPIER MAINT CONTRCT	695.00 695.00 *
5230	Telecommunications 10105 AT&T 10105 AT&T 10105 AT&T 28711 CENTURYLINK 28711 CENTURYLINK 28711 CENTURYLINK	392 3343 510 392 3623 510 392 4024 510 392 3343 510 392 3623 510 392 4024 510	PHONE-J&D PHONE-JUV PROB PHONE-GEN DIST COURT PHONE-J&D PHONE-JUV PROB PHONE-GEN DIST COURT	203.41 254.37 137.53 82.44 114.33 297.76 1,089.84 * 1,784.84 **
021300	SPECIAL MAGISTRATES			
5230	Telecommunications 10105 AT&T 13325 TREASURER OF VIRGINIA 28711 CENTURYLINK	392 3750 510 T220935 392 3750 510	PHONE PAGER RENTAL PHONE	128.56 17.10 89.30 234.96 *
6001	Office Supplies 20600 KEY OFFICE SUPPLY	377982	DESK TRAYS/ENVELOPES	25.66

AP375H
6/04/2010
FUND # - 100 GENERAL FUND

PRINCE EDWARD
LISTING OF INVOICES FOR 6/02/2010 -- 6/02/2010

BEFORE CHECKS
PAGE 4

MAJOR# ACCT#	VENDOR NUMBER KEY OFFICE SUPPLY	VENDOR NAME	INV#	DESCRIPTION INK CARTRIDGES/INDEX	ACCOUNT TOTAL MAJOR TOTAL	AMOUNT 205.04 230.70 * 465.66 **
021600		CLERK OF THE CIRCUIT COURT				
3161	11636	Professional Ser-Preserva BROWN'S RIVER MAROTTI CO	378265	BOOK RESTORATION	ACCOUNT TOTAL	4,995.00 *
5230	10105 28711	Telecommunications AT&T CENTURYLINK	392 5145 510 392 5145 510	PHONE PHONE	ACCOUNT TOTAL	110.36 279.24 389.60 *
6012	18666	Books and Subscriptions IMAGE GRAPHICS INC	FY2010-747	MICROFILM CONVERSION	ACCOUNT TOTAL	1,950.00 1,950.00 * 7,334.60 **
021800		LAW LIBRARY				
6012	22210	Books and Subscriptions MATTHEW BENDER & CO INC	2545624	CODE RULES 2010 RV11	ACCOUNT TOTAL	47.71 47.71 * 47.71 **
022100		COMMONWEALTH'S ATTORNEY				
5210	25483	Postal Services PITNEY BOWES FINANCL SERV	1679555 MY10	EQUIPMENT LEASE	ACCOUNT TOTAL	105.87 105.87 *
5230	10105 20904 28711	Telecommunications AT&T KINEX NETWORKING SOLUTION CENTURYLINK	392 1902 510 100514 0008 392 1902 510	PHONE INTERNET PHONE	ACCOUNT TOTAL	569.13 49.95 288.80 907.88 *
5899	28342	Miscellaneous SHRED-IT	064607077	SHREDDING SERVICE	ACCOUNT TOTAL	42.00 42.00 *
6012	16177	Books and Subscriptions GERONIMO DEVELOPMENT CORP	9049	SUBSCRIPTION-CASEFND	ACCOUNT TOTAL	619.00 619.00 * 1,674.75 **
022200		VICTIM WITNESS ASSISTANCE PROGRAM				
5230	28711	Telecommunications CENTURYLINK	315 0065 510	PHONE	ACCOUNT TOTAL	81.93 81.93 *
5510	28060	Travel-Mileage SAMS CINDY	MILEAGE 510	MILEAGE	ACCOUNT TOTAL	50.00 50.00 *

AP375H
6/04/2010
FUND # - 100 GENERAL FUND

PRINCE EDWARD
LISTING OF INVOICES FOR 6/02/2010 -- 6/02/2010

BEFORE CHECKS
PAGE 5

MAJOR# ACCT# 6001	VENDOR NUMBER	VENDOR NAME	INV#	DESCRIPTION	AMOUNT
	20600	Office Supplies KEY OFFICE SUPPLY	377772	OFFICE SUPPLIES	8.14
				ACCOUNT TOTAL	8.14 *
				MAJOR TOTAL	140.07 **
031200	SHERIFF				
3170	22347	Drug Testing MEDTOX LABORATORIES INC	4201094888	DRUG TESTING	50.00
				ACCOUNT TOTAL	50.00 *
3311	15945	Repairs & Maint-Auto & Eq FRANKLIN ROBBY	MAY 13 10	REPAIR 1986 BLAZER	150.00
	21038	KUSTOM SIGNALS INC	416223	REPAIR IN-CAR CAMERA	626.45
	21249	LAM ROBBIE	2007A	REPAIR LIGHTBAR CNTL	80.00
	27139	RAYBOLD STUART	EXPENSES 510	DMV REGISTRATION	5.00
				ACCOUNT TOTAL	861.45 *
3312	20904	Repairs & Maintenance-Off KINEX NETWORKING SOLUTION	100517 0100	REPAIR VCIN	37.50
				ACCOUNT TOTAL	37.50 *
5230		Telecommunications			
	10105	AT&T	392 8101 510	PHONE	547.31
	28711	CENTURYLINK	024 0031 510	PHONE	10.36
	28711	CENTURYLINK	392 6730 510	PHONE	32.76
	28711	CENTURYLINK	392 8101 510	PHONE	396.61
	28728	CENTURYLINK	1000121124 510	PHONE	27.53
	30439	US CELLULAR	828371319 510	PHONE	57.93
	30439	US CELLULAR	9182210747 510	PHONE	620.82
				ACCOUNT TOTAL	1,693.32 *
5530	12178	Travel-Subsistence & Lodg CARR LYNNAEUS	MEALS 510	MEALS	15.80
	15944	FRANKLIN LARRY	MEAL 510	MEAL	4.82
	19119	JACKSON ROGER	MEALS 510	MEALS	8.58
				ACCOUNT TOTAL	29.20 *
6001	28757	Office Supplies STAPLES BUSINESS ADVANTAG	8015421291	PHOTO PAPER & INK	1,366.15
	28757	STAPLES BUSINESS ADVANTAG	8015531403	COPY PAPER/HANG FILE	224.32
				ACCOUNT TOTAL	1,590.47 *
6010	13012	Police Supplies DMV	10120312	SPECIAL ID	10.00
	28432	SIRCHIE FINGER PRINT LABS	548062	FINGERPRINT SUPPLIES	982.49
	28432	SIRCHIE FINGER PRINT LABS	548280	FINGERPRINT PAD	99.78
	28592	SOUTHERN POLICE EQUIP CO	138650	HOLSTER/AMMO MAGAZIN	137.94
	28592	SOUTHERN POLICE EQUIP CO	138861	SHOES & BRASS BUCKLE	62.99
	28757	STAPLES BUSINESS ADVANTAG	8015421291	CAMERAS	599.70
	29342	TOWN POLICE SUPPLY-RCHMND	R74340	AMMUNITION	233.34
	29342	TOWN POLICE SUPPLY-RCHMND	R74341	AMMUNITION	233.34
				ACCOUNT TOTAL	2,359.58 *
6011	20008	Uniforms & Wearing Appare JUST SEW EMBROIDERY	427	CAPS WITH PEC LOGO	312.00

AP375H
6/04/2010
FUND # - 100 GENERAL FUND

LISTING OF INVOICES FOR 6/02/2010 -- 6/02/2010

BEFORE CHECKS
PAGE 6

MAJOR# ACCT#	VENDOR NUMBER NAME	INV#	DESCRIPTION	AMOUNT
6012	26360 QUANTUM GRAPHICS/UNIFORMS	5459	SHIRTS	164.00
	26360 QUANTUM GRAPHICS/UNIFORMS	5513	SGT CHEVRONS	14.00
	28592 SOUTHERN POLICE EQUIP CO	137854	RADIO BELT LOOP	59.97
	28592 SOUTHERN POLICE EQUIP CO	138549	SHOES	63.46
			ACCOUNT TOTAL	613.43 *
8202	22210 MATTHEW BENDER & CO INC	903795	LEGISLATIVE SUMMARY	65.71
			ACCOUNT TOTAL	65.71 *
8203	30435 UPTIME BUSINESS PRODUCTS	49502	DISPATCHER CHAIRS	1,884.00
			ACCOUNT TOTAL	1,884.00 *
	30470 USA MOBILITY WIRELESS INC	T0638317E	PAGER RENTAL	82.86
			ACCOUNT TOTAL	82.86 *
			MAJOR TOTAL	9,267.52 **
032200	VOLUNTEER FIRE DEPARTMENT			
7004	Payment to Darlington VFD			
	12024 C W WILLIAMS	526708	SCBA TESTS	1,598.98
	22468 MID-ATLANTIC IRRIGATION	175295	PUMP FOR BRUSH TRUCK	3,426.70
	22502 STELLAR ONE BANK	0467949058 #58	LOAN PAYMENT	501.50
	28640 SOUTHSIDE ELECTRIC COOP	38156 001 510	ELECTRIC SERVICE	194.75
			ACCOUNT TOTAL	5,721.93 *
7006	Payment to Pamplin VFD			
	10105 AT&T	248 6690 510	PHONE	43.67
	10291 AMELIA OVERHEAD DOORS	61303	CHECKED BAY DOOR	250.00
	11317 BLUE RIDGE RESCUE SUPPLRS	21127	SERVICE JAWS OF LIFE	515.00
	12024 C W WILLIAMS	526774	SERVICED SCBA EQUIP	1,117.80
	15656 FIRE & SAFETY EQUIP CO	28492	TEST SCBA TANKS	70.00
	25200 PAMPLIN VOL FIRE DEPT	REIMB 510	INSURANCE	2,546.00
	25200 PAMPLIN VOL FIRE DEPT	REIMB 510	VEHICLE MAINT/REPAIR	229.28
	25200 PAMPLIN VOL FIRE DEPT	REIMB 510	FUEL	391.70
	31335 VERIZON	248 6100 510	PHONE	61.17
	31359 VEST'S SALE & SERVICE INC	8645	BOOTS	140.00
	31846 DOMINION VA POWER	4743517221 510	ELECTRIC SERVICE	172.09
	31846 DOMINION VA POWER	6280980001 510	ELECTRIC SERVICE	28.22
			ACCOUNT TOTAL	5,564.93 *
			MAJOR TOTAL	11,286.86 **
034100	BUILDING OFFICIAL			
6001	Office Supplies			
	15380 FARMVILLE PRINTING	CO ADMR 510	OFFICE FORMS	69.10
			ACCOUNT TOTAL	69.10 *
			MAJOR TOTAL	69.10 **
035100	ANIMAL CONTROL			
5110	Electrical Services			
	31844 DOMINION VA POWER	0890745003 510	ELECTRIC SERVICE	52.18
			ACCOUNT TOTAL	52.18 *

MAJOR# ACCT#	VENDOR NUMBER NAME	INV#	DESCRIPTION	AMOUNT
5440	28869	829	Portable Toilet Rental STIFF O O INC	662.50 *
			ACCOUNT TOTAL	422.40 *
042610	SANDY RIVER RESERVOIR			
3160	28092	8000009	Professional Services SCHNABEL ENGINEERING LLC	662.50 *
			MAJOR TOTAL	45,018.09 **
043200	GENERAL PROPERTIES			
3310	15686	8776	Repairs/Maintenance FIRE SPRINKLER LTD	11,335.50
	24086	MAY 25 10	OK TERMITES & PEST CONTROL	11,335.50 *
			ACCOUNT TOTAL	11,335.50 **
5110	28640	114379 002 510	Electrical Services SOUTHSIDE ELECTRIC COOP	28.55
	31844	1230385005 510	DOMINION VA POWER	11.14
	31844	2786281903 510	DOMINION VA POWER	8,638.63
	31844	9670710004 510	DOMINION VA POWER	21.70
	31846	4951935099 510	DOMINION VA POWER	5.50
	31846	5856894620 510	DOMINION VA POWER	11.93
			ACCOUNT TOTAL	8,717.45 *
5230	28711	392 1943 510	Telecommunications CENTURYLINK	69.32
			ACCOUNT TOTAL	69.32 *
5303	23297	3000182673 510	Flood Insurance NATL FLOOD INS PROGRAM	740.00
			ACCOUNT TOTAL	740.00 *
5440	28869	829	Portable Toilet Rental STIFF O O INC	100.00
			ACCOUNT TOTAL	100.00 *
6005	32550	1231472 01	Janitorial Supplies WILCO INC.	867.59
			ACCOUNT TOTAL	867.59 *
6007	11308	2010 05 27 01	Repairs and Maintenance S BLUE RIDGE IMAGING	1,188.00
	13369	11393100 510	DIAMOND SPRINGS	15.70
	23792	1006	W C NEWMAN CO INC	520.25
	23792	1010	W C NEWMAN CO INC	149.00
	25680	780430	PRICE SUPPLY CO INC	91.82
			ACCOUNT TOTAL	1,964.77 *

AP375H
6/04/2010
FUND # - 100 GENERAL FUND

PRINCE EDWARD
LISTING OF INVOICES FOR 6/02/2010 -- 6/02/2010

BEFORE CHECKS
PAGE 9

MAJOR# ACCT# 6009	VENDOR NUMBER	VENDOR NAME	INV#	DESCRIPTION	AMOUNT
	15150	Vehicle & Powered Equip S	32337	RECHRG KIT/STOPLKAK	32.97
	15150	FARMVILLE AUTO PARTS	33827	WINDSHIELD REPAIR KIT	13.60
	32131	FARMVILLE AUTO PARTS	2238	FIX-A-FLAT	3.24
		WAL-MART COMMUNITY	CO ADM 510		49.81 *
				ACCOUNT TOTAL	13,858.94 **
				MAJOR TOTAL	
043400	CANNERY				
5110	28640	Electrical Services	44435 001 510	ELECTRIC SERVICE	51.12
		SOUTHSIDE ELECTRIC COOP			51.12 *
5540	29460	Travel-Conventioin & Educa			
		TREASURER OF VIRGINIA	SCHOLARSHIPS	PROCESS CONTROL SCHL	1,500.00
					1,500.00 *
6001	15380	Office Supplies	CO ADMR 510	STAMP	23.10
		FARMVILLE PRINTING			23.10 *
				ACCOUNT TOTAL	1,574.22 **
				MAJOR TOTAL	
053500	COMPREHENSIVE SERVICES ACT				
3160		CSA Programs			
	11490	BRALEY & THOMPSON INC	CP 510	PROFESSIONAL SERVICE	3,577.00
	15766	FISHER JUANITA	MAY 10	FOSTER CARE	230.00
	17372	HARLAN RONALD & SARAH	MAY 10	FOSTER CARE	448.00
	17754	HELTON HOUSE INC	2123	PROFESSIONAL SERVICE	2,221.35
	17754	HELTON HOUSE INC	2140	PROFESSIONAL SERVICE	3,105.00
	19341	JOHANSEN ROBERT & LILLIAN	MAY 10	FOSTER CARE	1,050.00
	22457	MILLS BONNIE	MAY 10	FOSTER CARE	896.00
	22703	MORTON DEKEACE	MAY 10	FOSTER CARE	666.00
	28447	SMITH I'SHAWN	MAY 10	FOSTER CARE	644.00
				ACCOUNT TOTAL	12,837.35 *
				MAJOR TOTAL	12,837.35 **
081100	PLANNING				
3600	15240	Advertising	CO ADMR 510	ADVERTISING	78.00
		FARMVILLE HERALD			78.00 *
5510	25359	Travel-Mileage	MILEAGE 510	MILEAGE	292.10
	29386	PICKETT JONATHAN	EXPENSES 510	MILEAGE	60.00
		TOWNSEND JOHN F III			352.10 *
				ACCOUNT TOTAL	111.37
				ACCOUNT TOTAL	111.37 *
5530	29386	Travel-Subsistence & Lodg	EXPENSES 510	MEAL & LODGING	39.95
		TOWNSEND JOHN F III			39.95 *
				ACCOUNT TOTAL	581.42 **
				MAJOR TOTAL	
6001	11902	Office Supplies	20100149	WINZIP SOFTWARE	
		BUSINESS DATA OF VA, INC.			

MAJOR#	VENDOR NUMBER	VENDOR NAME	INV#	DESCRIPTION	AMOUNT
081500	ECONOMIC DEVELOPMENT				
3160	13335	Professional Services DETAILS & COMPANY	MAY 26 2010	PHOTOGRAPHY	ACCOUNT TOTAL 100.00 100.00 *
5110	31846	Electrical Services DOMINION VA POWER	0675198071 510	ELECTRIC SERVICE	78.21
	31846	DOMINION VA POWER	1059387447 510	ELECTRIC SERVICE	23.63
				ACCOUNT TOTAL	101.84 *
5530	12122	Travel-Subsistence & Lodg CARNEY SHARON LEE	REIMB 510	CHAMBER MTG LUNCHESES	ACCOUNT TOTAL 20.00 20.00 *
5899	15380	Special Projects FARMVILLE PRINTING	ECO DEV 510	COPIES	ACCOUNT TOTAL 91.40 91.40 *
				MAJOR TOTAL	313.24 **
081600	TOURISM				
5110	31846	Electrical Services DOMINION VA POWER	0675198071 510	ELECTRIC SERVICE	78.21
	31846	DOMINION VA POWER	1059387447 510	ELECTRIC SERVICE	23.62
				ACCOUNT TOTAL	101.83 *
5230	22489	Telecommunications MOONSTAR BBS	ECO DEV 510	DSL	45.00
	28711	CENTURYLINK	392 1482 510	PHONE	193.39
				ACCOUNT TOTAL	238.39 *
6001	20600	Office Supplies KEY OFFICE SUPPLY	376845	INK CARTRIDGES/ENV	317.87
	20600	KEY OFFICE SUPPLY	377753	RECEIPT BOOK	10.75
				ACCOUNT TOTAL	328.62 *
				MAJOR TOTAL	668.84 **
083500	COOPERATIVE EXTENSION OFFICE				
3199	29913	Purchase of Service - Oth TREASURER VA TECH	3RD QTR 510	3RD QTR SUPPORT	ACCOUNT TOTAL 11,163.69 11,163.69 *
5230	28711	Telecommunications CENTURYLINK	392 4246 510	PHONE	ACCOUNT TOTAL 97.69 97.69 *
				MAJOR TOTAL	11,261.38 **
094000	CAPITAL PROJECTS				
0022	15560	Telephone System FARMVILLE WHSALE ELECTRIC	419824	CONDUIT TO RUN CABLE	327.08
	15560	FARMVILLE WHSALE ELECTRIC	419845	ELECTRICAL SUPPLIES	33.64
				ACCOUNT TOTAL	360.72 *

AP375H
6/04/2010
FUND # - 100 GENERAL FUND

LISTING OF INVOICES FOR 6/02/2010 -- 6/02/2010

BEFORE CHECKS
PAGE 11

MAJOR# ACCT# 0024	VENDOR NUMBER	VENDOR NAME	INV#	DESCRIPTION	AMOUNT
	13664	DIXIE CANNER COMPANY Cannery	11153	FREIGHT CHARGES	430.59
	15596	FERGUSON ENTERPRISES INC	1989861	PLUMBING SUPPLIES	33.21
				ACCOUNT TOTAL	463.80 *
0027	10291	STEPS-Tobacco Commission AMELIA OVERHEAD DOORS	61965	OVERHEAD DOORS-STEPS	19,438.00
				ACCOUNT TOTAL	19,438.00 *
				MAJOR TOTAL	20,262.52 **
095000		DEBT SERVICE			
0010	30600	Rural Dev Rev Bond 1998B- RURAL DEVELOPMENT	LOAN 97-01 510	COURTHOUSE LOAN	6,508.00
				ACCOUNT TOTAL	6,508.00 *
0012	30600	Rural Dev CH Constr 1998C RURAL DEVELOPMENT	97-02 510	COURTHOUSE LOAN	10,118.00
				ACCOUNT TOTAL	10,118.00 *
				MAJOR TOTAL	16,626.00 **
				FUND TOTAL	189,403.49

PRINCE EDWARD
LISTING OF INVOICES FOR 6/02/2010 -- 6/02/2010

AP375H
6/04/2010
FUND # - 501 WATER FUND

MAJOR#	VENDOR NUMBER	VENDOR NAME	INV#	DESCRIPTION	AMOUNT
8102	12937	SRR Water Treatment Proje CROWDER CONSTRUCTION CO	4	WTR TREATMENT PROJECT	122,091.00
				ACCOUNT TOTAL	122,091.00 *
				MAJOR TOTAL	122,091.00 **
				FUND TOTAL	122,091.00

AP375H
6/04/2010
FUND # - 732

RETIREMENT BENEFIT FUND

PRINCE EDWARD
LISTING OF INVOICES FOR 6/02/2010 -- 6/02/2010

BEFORE CHECKS
PAGE 13

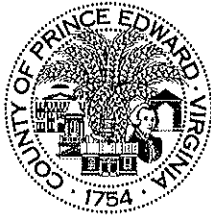
MAJOR#	VENDOR	VENDOR	INV#	DESCRIPTION	AMOUNT
ACCT#	NUMBER	NAME			
002230	RETIREMENT BENEFIT FUND				
1101	LEOS Disbursements				
	25257	JOHNS VICKI K	JUNE 2010	RETIREE BENEFIT	1,038.00
				ACCOUNT TOTAL	1,038.00 *
				MAJOR TOTAL	1,038.00 **
				FUND TOTAL	1,038.00

AP375H PRINCE EDWARD LISTING OF INVOICES FOR 6/02/2010 -- 6/02/2010
6/04/2010
FUND # - 741 PIEDMONT COURT SERVICES FUND

MAJOR#	VENDOR NUMBER	VENDOR NAME	INV#	DESCRIPTION	AMOUNT
021400	PIEDMONT COURT SERVICES				
5110	31846	Electrical Service	4323543985	ELECTRIC SERVICE	33.14
	31846	DOMINION VA POWER	7218131923	ELECTRIC SERVICE	119.10
				ACCOUNT TOTAL	152.24 *
5230	10105	Telecommunications	392 8161	PHONE	155.20
	28711	CENTURYLINK	392 8161	PHONE	208.89
				ACCOUNT TOTAL	364.09 *
5510	15936	Travel - Mileage	MILEAGE 510	MILEAGE	4.00
		FOX SANDY			4.00 *
6001	25266	Office Supplies	7250	ALCO SENSOR CALIBRTN	109.37
		PAS SYSTEMS			109.37 *
6040	20904	ADP Equipment	100522 0036	OFF SITE BACKUP	14.95
		KINEX NETWORKING SOLUTION			14.95 *
				ACCOUNT TOTAL	644.65 **
097001	PCS SUPERVISION FEES EXPENDITURES				
5420	28724	PCS - Lease/Rent of Build	RENT 510	RENT	2,383.00
		SRP CORPORATION LLC			2,383.00 *
6006	17346	PCS - Janitorial Services	MAY 2010	CLEANING SERVICE	210.00
		HARDY PAGE			210.00 *
				ACCOUNT TOTAL	2,593.00 **
				FUND TOTAL	3,237.65
				TOTAL DUE	315,770.14

Approved at meeting of _____ on _____

Signed _____ Title _____ Date _____
 _____ Title _____ Date _____
 _____ Title _____ Date _____



County of Prince Edward
Board of Supervisors
Agenda Summary

Meeting Date: June 8, 2010
Item No.: 28
Department: County Administration
Staff Contact: Sarah Elam Puckett
Issue: Resolution of Respect: Dr. Patricia P. Cormier

Summary: Vice Chairman Simpson had requested that a resolution be prepared to honor Dr. Patricia Cormier, President of Longwood University. Attached for your consideration is a draft resolution. Dr. Cormier will be present at the Board meeting for the presentation of the resolution.

Attachments: Draft Resolution

Recommendation: Approval.

Motion _____
Second _____

Campbell _____
Jones _____
Wilck _____

Fore _____
McKay _____
Wiley _____

Gantt _____
Simpson _____

BOARD OF SUPERVISORS

WILLIAM G. FORE, JR.
CHAIRMAN

HOWARD F. SIMPSON
VICE-CHAIRMAN

HOWARD M. CAMPBELL
DON C. GANTT, JR.
ROBERT M. JONES
CHARLES W. MCKAY
JAMES R. WILCK
MATTIE P. WILEY



COUNTY ADMINISTRATOR
W.W. BARTLETT

POST OFFICE BOX 382
FARMVILLE, VA 23901

(434) 392-8837 VOICE
(434) 392-6683 FAX

WBARTLETT@CO.PRINCE-EDWARD.VA

COUNTY OF PRINCE EDWARD, VIRGINIA

A RESOLUTION OF RESPECT

Dr. Patricia Picard Cormier
President, Longwood University

WHEREAS, Dr. Patricia Picard Cormier, the 24th president of Longwood University, has been a resident of Prince Edward County and the Town of Farmville since 1996; and

WHEREAS, during her tenure as president, Dr. Cormier has led Longwood University to new levels of academic excellence; through the rebuilding as a result of the "Great Fire of 2001"; from college to university status; to NCAA Division I status; to accomplishing Brock Commons, the Chichester Science Center, Longwood Landings, Lancer Park, the new Health & Fitness Center, a Bachelor of Science in Nursing Program and a permanent home for the Longwood Center for the Visual Arts; to name a few; and

WHEREAS, Dr. Cormier, who will retire from the presidency of Longwood University on June 30, 2010, leaves an extraordinary legacy not only to Longwood University, but also to the Prince Edward-Farmville community; and

WHEREAS, her energy, leadership, generosity, and indomitable spirit will be keenly missed, Dr. Cormier will be fondly remembered by the Prince Edward – Farmville community;

NOW, THEREFORE, BE IT RESOLVED, that the Board of Supervisors of the County of Prince Edward, Virginia, hereby expresses its sincere appreciation to Dr. Patricia P. Cormier for her exemplary leadership and vision as president of Longwood University and for her significant contributions to the Prince Edward-Farmville community; and

BE IT RESOLVED FURTHER, that a copy of this resolution be prepared for presentation to Dr. Patricia P. Cormier, as an expression of respect by the members of the Board of Supervisors of the County of Prince Edward, Virginia.

Certification

I hereby certify that the foregoing resolution was duly considered by the Board of Supervisors of the County of Prince Edward, Virginia at a regular meeting in Prince Edward County, Virginia, at which a quorum was present and that same was passed, this 8th day of June, 2010.

William G. Fore, Jr., Chairman

Howard F. Simpson, Vice-Chairman

Howard M. Campbell

Don C. Gantt, Jr.

Robert M. Jones

Charles W. McKay

Jim Wilck

Mattie P. Wiley

PRINCE EDWARD COUNTY BOARD OF SUPERVISORS

MISSION STATEMENT

TO REPRESENT ALL CITIZENS, PROVIDE LEADERSHIP, CREATE VISION AND SET POLICY TO ACCOMPLISH EFFECTIVE CHANGE, PLANNED GROWTH AND PROVIDE ESSENTIAL SERVICES WHILE MAINTAINING AND ENHANCING THE QUALITY OF LIFE IN PRINCE EDWARD COUNTY.



County of Prince Edward
Board of Supervisors
Agenda Summary

Meeting Date: June 8, 2010
Item No.: 29
Department: County Administration
Staff Contact: W.W. Bartlett
Issue: Amendment to County Health Insurance Program – Supplemental Info.

Summary: Attached is a revised resolution related to Agenda Item #17 (pages 147 – 150) of the main Board Agenda.

Attachments: Revised Resolution

Recommendation: None.

Motion _____
Second _____

Campbell _____
Jones _____
Wilck _____

Fore _____
McKay _____
Wiley _____

Gantt _____
Simpson _____

BOARD OF SUPERVISORS

WILLIAM G. FORE, JR.
CHAIRMAN

HOWARD F. SIMPSON
VICE-CHAIRMAN

HOWARD M. CAMPBELL
DON C. GANTT, JR.
ROBERT M. JONES
CHARLES W. MCKAY
JAMES R. WILCK
MATTIE P. WILEY



COUNTY ADMINISTRATOR
W.W. BARTLETT

POST OFFICE BOX 382
FARMVILLE, VA 23901

(434) 392-8837 VOICE
(434) 392-6683 FAX

WBARTLETT@CO.PRINCE-EDWARD.VA.GOV

COUNTY OF PRINCE EDWARD, VIRGINIA

Resolution

The Local Choice Health Benefits Program

The Local Choice Health Benefits Program provides health insurance benefits to our employees and their dependents. Be it hereby resolved that this 8th day of June, 2010, Prince Edward County does approve that coverage be added for our elected governing body and their dependents to be effective on July 1, 2010 and continuing in conjunction with our health insurance benefits. It is our desire to cover them as a special class of part-time employees. This special class contains only officials elected to the Board of Supervisors. By this action, the Board of Supervisors authorizes this special class to participate in the County's health insurance plan. We recognize that health benefits for this class of employee will be available as long as they remain in their elected position. Retiree coverage for elected officials is not available.

Signature/Date

William G. Fore, Jr., Chairman, Board of Supervisors
Print or Type Name and Title

Prince Edward County, Virginia
Group Name



**County of Prince Edward
Board of Supervisors
Agenda Summary**

Meeting Date: June 8, 2010
Item No.: 30
Department: County Administrator
Staff Contact: W.W. Bartlett
Issue: WATER PROJECT UPDATE

Summary:

To date we have spent \$643,509 on the interim water agreement. The last monthly bill is shown as attachment 1. Attachment 2 shows the various work projects, the cost of each, the percentage completion of each item and the amount to date billed.

Attachment 3 displays the Presentation Level Estimate for 2 treatment options and 2 capacity options. These estimates are for planning purposes and per our agreement are in the +/- 30% range. As mentioned earlier refinements are constantly being made and we hope these estimates will decrease. Attachment 4 displays the estimated indirect cost of the 2 capacity options.

Attachment 5 lists the estimated operational costs. These cost average to be approximately \$4.38 per 1,000 gallons for the 1 MGD plant and \$2.27 per 1,000 gallons for the 2 MGD plant. For Comparison we recently paid the Town of Farnville an average cost of \$3.19 per thousand gallons. Thus, the cost per 1,000 gallons for the 2 MGD plant appears to be competitive. Certain operational assumptions were made to develop the operational costs and we are working to decrease these costs.

We are still striving to develop our partners. We meet with representatives of the Town of Burkeville which included town council members. They are extremely interested in joining the water authority and partnering with Prince Edward. They are facing substantial capital costs in the near future in both their treatment and distribution systems. It appears joining with Prince Edward could eliminated much if not all of these costs. We have met with the Town of Crewe and obtained data on their current system. They too have significant capital costs in the near future. It appears the estimated operating costs for the 2 MGD plant could allow Crewe the ability to join the authority. We are in the process of scheduling additional meetings with Crewe to further investigate a partnership. Financial modeling is continuing.

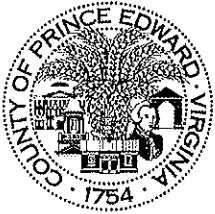
We are currently investigating a financing which could utilize a federal tax credit called the New Market Tax Credit (NMTC). This tax credit has been in existence since 2000 and has been used in Virginia. We are continuing our investigation of this financing structure and will hold a work session in the future. But in summary the credit was developed by the Federal Government to foster investment in qualified distressed areas. Prince Edward County qualifies. The credit is worth 39% of the initial investment and is distributed over 7 years. During the first 7 years you only pay interest with a balloon at the end of year 7. After the 7th year permanent financing is obtained with the 39% being forgiven. Attachments 6 & 7 display the affects of this financing vehicle.

Motion _____
 Second _____

Campbell _____
 Jones _____
 Wilck _____

Fore _____
 McKay _____
 Wiley _____

Gantt _____
 Simpson _____



**County of Prince Edward
Board of Supervisors
Agenda Summary**

There is no doubt the debt service on this project if actually completed is considerable. It is our task to determine options that can make this project financially feasible for the County and any of our potential partners. The best solution would allow the revenues generated from the sale of water to be sufficient to pay all operating costs and the debt service. This seems a daunting task but one that maybe obtainable. The NMTC could go a long way in helping us obtain that goal. With a regional partnership it is extremely feasible that we will be able to obtain considerable financial assistance from the Tobacco Commission. Additional funding sources could be obtained from various state and federal grants. As an example Buckingham County just received a grant from Rural Development in the amount of \$5.822 million to build a new water plant.

Attachment 8 displays the County’s decreasing debt service amounts each year as compared to the amount paid in this current Fiscal Year. If the Board decides to continue developing this project permanent financing will not be needed until Fiscal Year 2013. By that time the County’s annual debt service will have decreased by over \$400,000. Within 8 years the decrease in debt service will be approximately equal to or greater than the debt service shown in the earlier attachments.

We still have much work to do on this project. Continued engineering work, review and approval by the health department, partnering development, financial modeling, grant applications and financial structuring are all on-going.

Attachments:

- Attachment 1 – Pay Application #4 dated May 4, 2010
- Attachment 2 - Payment Summary dated May 4, 2010
- Attachment 3 – Presentation Level Estimate of direct costs
- Attachment 4 – Presentation Level Estimate of indirect costs
- Attachment 5 – Presentation Level Estimate of operating costs
- Attachment 6 – New Market Tax Credit worksheet without Grants
- Attachment 7 – New Market Tax Credit worksheet with \$3 million in Grants
- Attachment 8 – Prince Edward County debt reduction Schedule

Recommendation:

Some Board members have requested more frequent updates. I fully understand this request. Because of the size of this project if the Board desires such updates I recommend special work sessions be scheduled with this project as the only topic.

Motion _____
Second _____

Campbell _____
Jones _____
Wilck _____

Fore _____
McKay _____
Wiley _____

Gantt _____
Simpson _____

Application for Payment Summary
Prince Edward County
Sandy River Reservoir Water Treatment & Distribution Project

Owner:

Prince Edward County
Interim Agreement dated January 19, 2010
P.O. Box 382
Farmville, VA 23901

Contractor:

Crowder Construction Company
Project No. 40212
1111 Burma Drive
Apex, NC 27539

Pay Application Number: 4
Pay Application Period: 4/1/2010 - 4/30/2010
Pay Application Date: 5/4/2010

Engineer:
Draper Aden & Associates
8090 Villa Park Drive
Richmond, VA 23228

Original Contract Price:	<u>\$ 1,979,000</u>
Net Change by Change Order:	<u>\$ (44,325)</u>
Current Contract Price:	<u>\$ 1,934,675</u>
Total Work Completed to Date:	<u>\$ 643,509</u>
Less Previous Payments:	<u>\$ 521,418</u>
Amount Due this Payment Application:	<u>\$ 122,091</u>
Remaining Work to Complete:	<u>\$ 1,291,166</u>

*vw
18937
501-94000-8102*

Submitted By:

Crowder Construction Company

Approved by:

Prince Edward County

By: Murray Taylor /vw
Murray Taylor

By: Wade Bartlett
Wade Bartlett - County Administrator

Date: 5/4/2010

Date: _____

Application for Payment Summary
Prince Edward County
Sandy River Reservoir Water Treatment & Distribution Project

Owner:

Prince Edward County
 Interim Agreement dated January 19, 2010
 P.O. Box 382
 Farmville, VA 23901

Contractor:

Crowder Construction Company
 Project No. 40212
 1111 Burma Drive
 Apex, NC 27539

Pay Application Number: 4
 Pay Application Period: 4/1/2010 - 4/30/2010
 Pay Application Date: 5/4/2010

Engineer:
 Draper Aden & Associates
 8090 Villa Park Drive
 Richmond, VA 23228

No.	Description of Work Item	Value	Percent Complete	Amount to Date
Overall Project				
1	Project Development	\$ 78,000	100.0%	\$ 78,000
2	Financial Analysis	\$ 32,562	39.0%	\$ 12,699
Water Treatment Plant				
3	Geotech - Intake	\$ 64,296	100.0%	\$ 64,296
4	Geotech - Water Plant	\$ 36,504	15.0%	\$ 5,476
5	Survey	\$ 27,600	66.0%	\$ 18,216
6	TOC Sampling and Lab work	\$ 110,500	65.0%	\$ 71,825
7	Project Management and Development	\$ 55,600	52.0%	\$ 28,912
8	PER	\$ 145,700	54.0%	\$ 78,678
9	PER - Subconsultants	\$ 31,250	15.0%	\$ 4,688
10	DEQ Discharge Permitting	\$ 31,250		\$ -
11	DEQ Discharge Permitting Subconsultant	\$ 37,600		\$ -
12	Intake Design	\$ 101,200	38.0%	\$ 38,456
13	Site Plan	\$ 61,000	19.0%	\$ 11,590
14	Preliminary WTP Design	\$ 90,000		\$ -
15	Architecture	\$ 64,500	11.0%	\$ 7,095
16	Electrical	\$ 7,000		\$ -
17	Structural	\$ 26,000		\$ -
18	Third party process review	\$ 16,800		\$ -
19	Controls and SCADA	\$ 11,500		\$ -
Distribution System				
20	Right of Way and Utility research	\$ 18,205		\$ -
21	Field Survey	\$ 11,000		\$ -
22	Environmental Permitting	\$ 24,560		\$ -
23	Geotech - Distribution System	\$ 102,000		\$ -
24	Project Management and Development	\$ 98,760	36.0%	\$ 35,554
25	PER	\$ 59,133	54.0%	\$ 31,932
26	Booster Pump Station Design	\$ 13,140		\$ -
27	Water Main Design	\$ 167,240	28.0%	\$ 46,827
28	Water Tank Design	\$ 45,680		\$ -
29	Electrical	\$ 20,250		\$ -
Preconstruction Services				
30	Presentation Level Estimate	\$ 36,000	100.0%	\$ 36,000
31	Preliminary Conceptual Estimate	\$ 88,000	10.0%	\$ 8,800
32	Final Conceptual Estimate	\$ 13,000		\$ -
33	Lump Sump Proposal	\$ 16,000		\$ -
34	Design Schedule	\$ 15,000	100.0%	\$ 15,000
35	Preliminary Construction Schedule	\$ 16,000		\$ -
36	Construction Planning & Review	\$ 141,420	35.0%	\$ 49,497
37	Onsite Geotechnical Services	\$ 64,750	89.0%	\$ 57,628
Scope Change Items				
38	TOC Sampling Credit	\$ (61,900)	65.0%	\$ (40,235)
39	Geotechnical Investigation Credit - Intake	\$ (13,395)	100.0%	\$ (13,395)
40	Landfill Evaluation	\$ 15,000		\$ -
41	Additional Lab Testing	\$ 20,000		\$ -
42	Preconstruction Services	\$ (4,030)	100.0%	\$ (4,030)
		Totals:		
		\$ 1,934,675		\$ 643,509

4. PRESENTATION LEVEL ESTIMATE

4.1. Project Direct Costs

The following tables detail the estimated direct costs which generally include all labor, material, supervision, and construction equipment costs employed to finalize the design and build the proposed facilities described in Section 2 and Section 3 above. We have included both the two (2) treatment and capacity options as currently evaluated. A reasonable range of costs have been established based on the different options. In addition to the higher costs associated with Option 3, the higher routing options have been applied to this cost scenario in order to create a "high" range option. As such, the lower cost routing options have been applied to Option 2B to create a "low" cost option.

Table 4-1
Option 2B – Mixed Media Filtration Costs

Cost Item Description	1 MGD WTP	2 MGD WTP
RW Intake & PS (8 MGD)	\$3,723,000	\$3,723,000
Water Treatment Plant	\$13,557,000	\$14,330,000
Water Distribution System	\$5,851,000	\$11,722,000
<i>Project Direct Cost Total</i>	<i>\$23,131,000</i>	<i>\$29,775,000</i>

Note:

1. 1 MGD option serves Route 15 corridor only
2. 2 MGD option serves both Route 15 corridor and Crewe & Burkeville

Table 4-2
Option 3 – Membrane Filtration Costs

Cost Item Description	1 MGD WTP	2 MGD WTP
RW Intake & PS (8 MGD)	\$3,723,000	\$3,723,000
Water Treatment Plant	\$15,670,000	\$16,830,000
Water Distribution System	\$6,349,000	\$13,250,000
<i>Project Direct Cost Total</i>	<i>\$25,742,000</i>	<i>\$33,803,000</i>

Note:

1. 1 MGD option serves Route 15 corridor only
2. 2 MGD option serves both Route 15 corridor and Crewe & Burkeville

4.2. Project Indirect Costs

The following indirect costs are that determined may be in addition to the above listed capital improvements associated with the development of this system and will be considered costs to be paid directly by the County. These costs have been developed based on historical information and our understanding of the scope of these requirements at this point. These may be subject to change based on options that are chosen as well as local influences that may affect cost.

Table 4-3
Estimated Project Indirect Costs (Owner)

Category	Cost Item Description	1 MGD	2 MGD
Power	Three-Phase to WTP	\$120,000	\$120,000
	On-Site	\$50,000	\$50,000
	Tank Site	\$20,000	\$20,000
	Pump Station Site	\$20,000	\$20,000
Telephone / Internet	WTP Site	\$15,000	\$15,000
Permits	Railroad	\$0	\$20,000
	Environmental	\$2,000	\$2,000
	VPDES	\$7,600	\$7,600
Building	Lab Equipment	\$25,000	\$25,000
	Tools / Spare Parts, Etc.	\$25,000	\$25,000
	Software	\$30,000	\$30,000
	Furniture	\$10,000	\$10,000
Land Costs	Tank / Pump Station Sites	\$25,000	\$25,000
	Easements	\$85,000	\$225,000
Legal	Bond Council	\$20,000	\$20,000
	Davenport	Not Known	Not Known
<i>Project Indirect Cost Total</i>		<i>\$454,600</i>	<i>\$614,600</i>

4.3. System Operational & Maintenance Costs

Table 4-4
Estimated Annual System O&M Costs

Category	Cost Item Description	1.0 MGD (See Note 1)	2.0 MGD (See Note 2)
Operation	Salary/Benefits	\$138,000	\$217,000
	Power	\$12,000	\$60,000
	Chemical	\$44,000	\$171,000
	Lab Costs	\$15,000	\$15,000
	Utilities	\$2,500	\$2,500
	Sludge Hauling	\$2,000	\$7,500
Maintenance	Contracts	\$20,000	\$20,000
	Maintenance	\$25,000	\$25,000
	Repairs	\$15,000	\$15,000
	Equipment	\$3,000	\$3,000
	Vehicles	\$15,000	\$15,000
Administrative	Misc. Office	\$3,000	\$5,000
	Legal	\$15,000	\$15,000
	Engineering	\$10,000	\$10,000
	<i>Project Annual Estimated O&M Cost Total</i>	<i>\$319,500</i>	<i>\$581,000</i>

Note:

1. Actual initial demand for the 1 MGD capacity plant will be < 0.2 MGD.
2. Actual initial demand for the 2 MGD capacity plant will be < 0.7 MGD.
3. During the initial years of the project, we have assumed that most of the administrative functions would be performed by current county staff members.
4. Salary based on Crewe WTP wages plus 35% for benefits
5. Chemical use assumes granular activated carbon (GAC)
6. Sludge will be disposed at County Landfill for no cost.

NEW MARKET TAX CREDIT FINANCING STRUCTURE

(Prince Edward County Water Project)

Qualified Low Income Community Investment	\$ 25,000,000
Qualified Equity Investment (QEI)	\$ 26,178,010
Federal Tax Credits Generated:	
Percent	39.00%
Amount	\$ 10,209,424
Sale Price of Tax Credits	<u>70.00%</u>
Proceeds From Sale of Tax Credits	\$ 7,146,597
Less: CDE Fees (4.50% of QEI)	<u>1,178,010</u>
Net Qualified Equity Investment	\$ 5,968,586
Market Rate Debt	<u>19,031,414</u>
Qualified Low Income Community Investment	\$ 25,000,000

Loan Components:	
Note A (market rate debt):	\$ 19,031,414
Note B (principal forgiven at maturity):	<u>5,968,586</u>
Total Loan Principal	\$ 25,000,000
Annual Interest Expense:	
Note A (5.75%)	\$ 1,094,306
Note B (0.50%)	<u>29,843</u>
Total Annual Interest Expense Years 1-7	\$ 1,124,149
Effective Interest Rate (first 7 years):	4.50%

PEC Acquisition Loan (End of Year 7)	\$ 19,100,000
Estimated Interest Rate	2.75%
Amortization	40 years
Average Annual Debt Service	\$ 793,252

Attachment 6

6/7/2010 10:57 PM

NEW MARKET TAX CREDIT FINANCING STRUCTURE
ASSUMES GRANTS OF \$3 million
(Prince Edward County Water Project)

Qualified Low Income Community Investment	\$ 25,000,000
Qualified Equity Investment (QEI)	\$ 26,178,010

Federal Tax Credits Generated:

Percent	39.00%
Amount	\$ 10,209,424
Sale Price of Tax Credits	<u>70.00%</u>
Proceeds From Sale of Tax Credits	\$ 7,146,597
Less: CDE Fees (4.50% of QEI)	<u>1,178,010</u>
Net Qualified Equity Investment	\$ 5,968,586
Grants	3,000,000
Market Rate Debt	<u>16,031,414</u>
Qualified Low Income Community Investment	\$ 25,000,000

Loan Components:

Note A (market rate debt):	\$ 16,031,414
Note B (principal forgiven at maturity):	<u>5,968,586</u>
Total Loan Principal	\$ 22,000,000
Annual Interest Expense:	
Note A (5.75%)	\$ 921,806
Note B (0.50%)	<u>29,843</u>
Total Annual Interest Expense Years 1 -7	\$ 951,649
Effective Interest Rate (first 7 years):	4.33%

PEC Acquisition Loan (End of Year 7)	\$ 16,100,000
Estimated Interest Rate	2.75%
Amortization	40 years
Average Annual Debt Service	\$ 668,658

Attachment 7

DEBT REDUCTION SCHEDULE

<u>FISCAL YEAR</u>	<u>DEBT REDUCTION</u>
2011	\$ 103,903
2012	\$ 213,887
2013	\$ 411,896
2014	\$ 431,945
2015	\$ 471,496
2016	\$ 490,745
2017	\$ 509,995
2018	\$ 729,546
2019	\$ 985,846
2020	\$ 988,385
2025	\$ 1,250,436

NOTES

1. Reduction as compared to Fiscal Year 2010
2. \$2.5M line of credit and interim agreement are assumed to be permanently financed with the water plant

Attachment 8



**County of Prince Edward
Board of Supervisors
Agenda Summary**

Meeting Date: June 8, 2010
Item No.: 31
Department: County Administrator
Staff Contact: W.W. Bartlett
Issue: COUNTY ADMINISTRATOR'S REPORT -- Supplemental

Summary:

- a. At the May meeting, I discussed with the Board the proposed County Line of Credit, which will be used to finance the PPEA Interim Agreement. Pending approval by the Industrial Development Authority on June 11, 2010, the Board will wish to consider authorizing me to draw down the line of credit.

- b. At the April Board meeting, I discussed with the Board a Task Order from Wiley & Wilson to assist the County with the PPEA Review. At that time the proposed cost of these services was \$36,000. The Board had requested that I renegotiate the cost down to \$30,000. Attached is a revised Task Order with a Lump Sum Cost of \$30,000. Board authorization to execute this agreement is requested.

Attachments: Revised Wiley & Wilson Task Order

- Recommendations:**
- a. Authorize the County Administrator to drawdown the County Line of Credit, pending final approval by the Industrial Development Authority.
 - b. Authorize the County Administrator to execute the revised Task Order with Wiley & Wilson

Motion _____
Second _____

Campbell _____
Jones _____
Wilck _____

Fore _____
McKay _____
Wiley _____

Gantt _____
Simpson _____



June 7, 2010

Mr. W. Wade Bartlett
County Administrator
Prince Edward County, Virginia
P.O. Box 382
Farmville, VA 23901

Re: Prince Edward County, PPEA Review - Additional Services during Interim Phase
Annual Services Task Order 2009-05 – Amended to Convert to Lump Sum

Dear Mr. Bartlett:

Wiley|Wilson is pleased to present the following amended professional services task order proposal to Prince Edward County, Virginia for Additional Utility PPEA Review services.

On 15 January 2010, Prince Edward County authorized engineering services included in our 2 September 2009 letter proposal entitled:

Prince Edward County, PPEA Review –
Additional Services during Interim Phase
Annual Services Task Order 2009-05
Wiley|Wilson Proposal No. P2009381

The additional services consisted of Wiley|Wilson serving as the County's engineering and technical resource during the Interim Phase of the Sandy River Reservoir Water Treatment and Distribution Project (PROJECT). For purposes of 2 September 2009 and this amended proposal, the Interim Phase shall be that part of the PROJECT that began with County's and Design Builder's execution of the Interim Agreement between the County and the Design Builder and that will end with the earlier of the execution of the anticipated Comprehensive Agreement or the County's termination of the PROJECT.

Subsequently in January 2010, Prince Edward County requested that Wiley|Wilson provide an amended proposal to convert the work to be performed under the 2 September 2010 letter proposal from an hourly basis to a lump sum basis. In March, a lump sum proposal was submitted and the Prince Edward County Board of Supervisors then directed you to limit our fees to \$30,000. Accordingly, we present this amended pricing proposal and scope of services.



Mr. W. Wade Bartlett
County Administrator
Prince Edward County, Virginia
PPEA Review - Additional Services during Interim Phase
June 7, 2010
Page 2 of 5

- **Scope of Services**

Scope of Services given below includes six work tasks that Wiley|Wilson will perform during this PROJECT for those components the PROJECT's activities as given in Table-1 and Table-2. The PROJECT components are from with a listing of activities to be performed by the Design Builder that the Design Builder provided the County.

1. Serving as the County's engineering and technical resource in assisting the County in fulfilling the County's responsibilities as set forth in Exhibit B to the Interim Agreement.
2. Providing the County with an engineering review of the 30% review set of plans and specifications prepared by the Design/Builder as set forth in E1.01. A. of Exhibit E. to the Interim Agreement.
3. Assisting the County in evaluating the Lump Sum Proposal to be provided by the Design/Builder as set forth in Exhibit E. to the Interim Agreement.
4. Meeting up to four times or communicating with the County staff or Board of Supervisor members, attorneys or other consultants the County's might employ, Regulatory Agencies, Crowder Construction Company or Draper Aden Associates staff, for the during the Interim Phase.
5. As limited in Tables 1 and 2 below, providing the County written memos, reports, and other correspondence that the County might request.
6. As limited in Tables 1 and 2 below, performing other relevant services that the County might request during the interim phase.



Mr. W. Wade Bartlett
 County Administrator
 Prince Edward County, Virginia
 PPEA Review - Additional Services during Interim Phase
 June 7, 2010
 Page 3 of 5

Table -1 Comprehensive Service	
The services described in items 1 through 6 above will be applied to the following PROJECT activities that were defined by the Design/Builder.	
Financial Analysis	Electrical ¹
Geotechnical - Water Plant	Presentation Level Estimate ¹
TOC Sampling and Lab work	Preliminary Conceptual Estimate ¹
Reservoir/Water Plant PER ¹	Final Conceptual Estimate
PER – Sub-consultants ¹	Lump Sum Proposal
DEQ Discharge Permitting ¹	Preliminary Construction Schedule ¹
Site Plan ¹	Onsite Geotechnical Services ¹
Preliminary WTP Design	Progress Meetings
Environmental Permitting ¹	Partnering
¹ Excluding finished water transmission, distribution, booster pumping and non-clearwell storage, raw water intake and raw water transmission components of the project.	

Table -2 Limited Services	
The services described in item 3 above would be applied to the following work tasks that were defined by the Design/Builder.	
Geotechnical - Intake	Booster Pump Station Design
Intake Design	Water Main Design
Distribution System PER	Water Tank Design
Geotechnical - Distribution System	

Wiley|Wilson will attend up to four progress or partnering meetings including the January 2010 progress meeting and the March 2010 partnering meeting.

- **Drawing List**

Wiley|Wilson will not provide any large format drawings during this phase.



Mr. W. Wade Bartlett
County Administrator
Prince Edward County, Virginia
PPEA Review - Additional Services during Interim Phase
June 7, 2010
Page 4 of 5

- **Deliverables**

Wiley|Wilson will provide an electronic PDF copy and one hard copy of any reports, memoranda, or other written document that may be required to fulfill the Scope of Work above.

- **Schedule**

Wiley|Wilson will begin work immediately upon receipt of a counter-signed copy of this proposal. Delivery times for other deliverables will be determined as such deliverables are identified.

- **Fee**

The lump sum fee for the proposed services will be \$30,000. This fee includes participation in the January 2010 progress and March 2010 partnering meetings that were attended under the 15 January 2010 authorization. The review of the use of resistivity testing also performed under the 15 January 2010 authorization shall not be included in the \$30,000 lump sum fee, but shall be billed separately up to \$790.00.

- **Changes in Scope**

It is common for the scope of services to change over the course of this type PROJECT. Changes in Wiley|Wilson's scope of services as defined in this letter must be authorized in writing by the County.

Please indicate your acceptance of this proposal by signing in the space provided below and returning it to us. Please contact Mr. Slaydon or me with any questions. We look forward to working with the County on this and other projects.

Sincerely,

Wiley|Wilson

J. Fred Armstrong, P.E.
Chairman and CEO

/TMS/mlj

cc: Ms. Sarah Puckett, Assistant County Administrator
Thomas M. Slaydon, PE. Project Manager- Wiley|Wilson



Mr. W. Wade Bartlett
County Administrator
Prince Edward County, Virginia
PPEA Review - Additional Services during Interim Phase
June 7, 2010
Page 5 of 5

Annual Services Task Order 2009-05

Approved: _____

Title: _____

Date: _____



County of Prince Edward
Board of Supervisors
Agenda Summary

Meeting Date: June 8, 2010
Item No.: 32
Department: County Administration
Staff Contact: W.W. Bartlett/Sarah Puckett
Issue: Upcoming Events

Summary:

Ribbon Cutting at Lib's Place
23147 Prince Edward Highway, Rice
Saturday, June 12, 2010 at 10:00 a.m.

VICFA "On the Farm" Day -- Shepherds Knoll Farm
248 Pisgah Church Road, Rice
Sunday, June 20, 2010, 1:00 – 5:00

Attachments: Invitation from Chamber
Information on VICFA "On the Farm" Day

Recommendation: None.

Motion _____
Second _____

Campbell _____
Jones _____
Wilck _____

Fore _____
McKay _____
Wiley _____

Gantt _____
Simpson _____

Wade Bartlett

From: Wanda Whitus [wwhitus@farmvilleareachamber.org]
Sent: Monday, June 07, 2010 9:51 AM
To: Wade Bartlett
Subject: Ribbon Cutting

Wade,

Good Morning. Is it possible for you to inform the Board of Supervisors know that we are having a Ribbon Cutting on Saturday morning (June 12) at 10 am for Lib's Place in Rice? Linda Lewis and Louisa Lackey have really worked hard to get this new business up and running.

The store is located at 23147 Prince Edward Highway, in Rice. We will be doing pictures at 10 am and would love for the Board of Supervisors to have representation in the picture. Thanks so much for helping me get word to the Board about this event.

Wanda Whitus, President
Farmville Area Chamber of Commerce
Post Office Box 361
Farmville, VA 23901
434 392-3939 Phone
434 392-3818 Fax

Please notice the change in the email address: wwhitus@farmvilleareachamber.org

FARMVILLE AREA CHAMBER OF COMMERCE: PROMOTING BUSINESS AND COMMUNITY

Seven out of ten consumers believe that being a Chamber member is an effective strategy for enhancing your business' reputation and demonstrates that you use good business practices. (Research by The Schapiro Group, 2007)

Join VICFA'S ACTION ALERTS List

Join Now

Home About Us VICFA Board Action Alerts Join VICFA

VICFA Info

- Donate to VICFA
- Meetings and Events
- Current Projects
- News Items
- Farm Food Voices
- Faces of VICFA
- VICFA Voice Newsletters
- Contact VICFA
- Links
- Government Contacts and Information
- Directions to VA General Assembly

VICFA "On the Farm" Day



Shepherds Knoll Farm

Contact:	Gwen and Barry Martin
Address:	248 Pisgah Church Road Rice, VA 23966
Phone:	434-392-6049
Email:	shepherdsknoll@embarqmail.com
Website:	
Opening Hours:	1-5 pm
Products:	Dexter cattle, raw milk shares, eggs, seasonal produce.
Directions:	From Farmville, go east on Rt 460 for 5 miles. Turn right on Pisgah Church Road and go 1/8 mile. Farm entrance is a gravel drive on right behind old Baptist Church.

Support VICFA

If you are interested in supporting our efforts and would like to contribute, you are welcome to make a donation through PayPal - it will be a great help and will surely be appreciated.

© 2009-2010 VICFA | Home |

SUNDAY, JUNE 20, 2010
1-5

Join VICFA'S ACTION ALERTS List

Join Now

Home About Us VICFA Board Action Alerts Join VICFA

VICFA Info

- Donate to VICFA
- Meetings and Events
- Current Projects
- News Items
- Farm Food Voices
- Faces of VICFA
- VICFA Voice Newsletters
- Contact VICFA
- Links
- Government Contacts and Information
- Directions to VA General Assembly

Mission Statement

Our purpose is to promote and preserve unregulated direct farmer-to-consumer trade that fosters availability of locally grown or home-produced food products.

The Virginia Independent Consumers and Farmers Association (VICFA) is a coalition of consumers and farmers dedicated to the protection and preservation of your food freedom. Through our lobbying and educational efforts, we strive to protect your right to choose what food you eat and from whom you obtain it.

Do your part to preserve your freedom by becoming a member, making a donation, or joining our action alert mailing list.

Support VICFA

If you are interested in supporting our efforts and would like to contribute, you are welcome to make a donation through PayPal - it will be a great help and will surely be appreciated.

VICFA "On The Farm" Day



Join us on June 20th when VICFA farmers invite you to visit their farms. Additional information is available on the Meetings and Events page.

Food Freedom Loses a Champion

It is with great sorrow that we announce the passing of **John Coles**, VICFA founder, board member and friend. A celebration of his life will be held at the Elks Lodge in Charlottesville, on April 13 beginning at 1:30 PM. The memorial will be followed by a pot luck buffet. The Elks Lodge is located on Route 20 North.

You can read Joel Salatin's **Tribute to John Coles** here.

Wayne Bolton's Farmer's Market Report May 21, 2010





County of Prince Edward
Board of Supervisors
Agenda Summary

Meeting Date: June 8, 2010
Item No.: 33
Department: County Administration
Staff Contact: W.W. Bartlett/Sarah Puckett
Issue: Informational – ADDENDUM

Summary:

Attachments:

- a. Virginia Town & City Article, *Public Private Partnerships*

Recommendation: None.

Motion _____
Second _____

Campbell _____
Jones _____
Wilck _____

Fore _____
McKay _____
Wiley _____

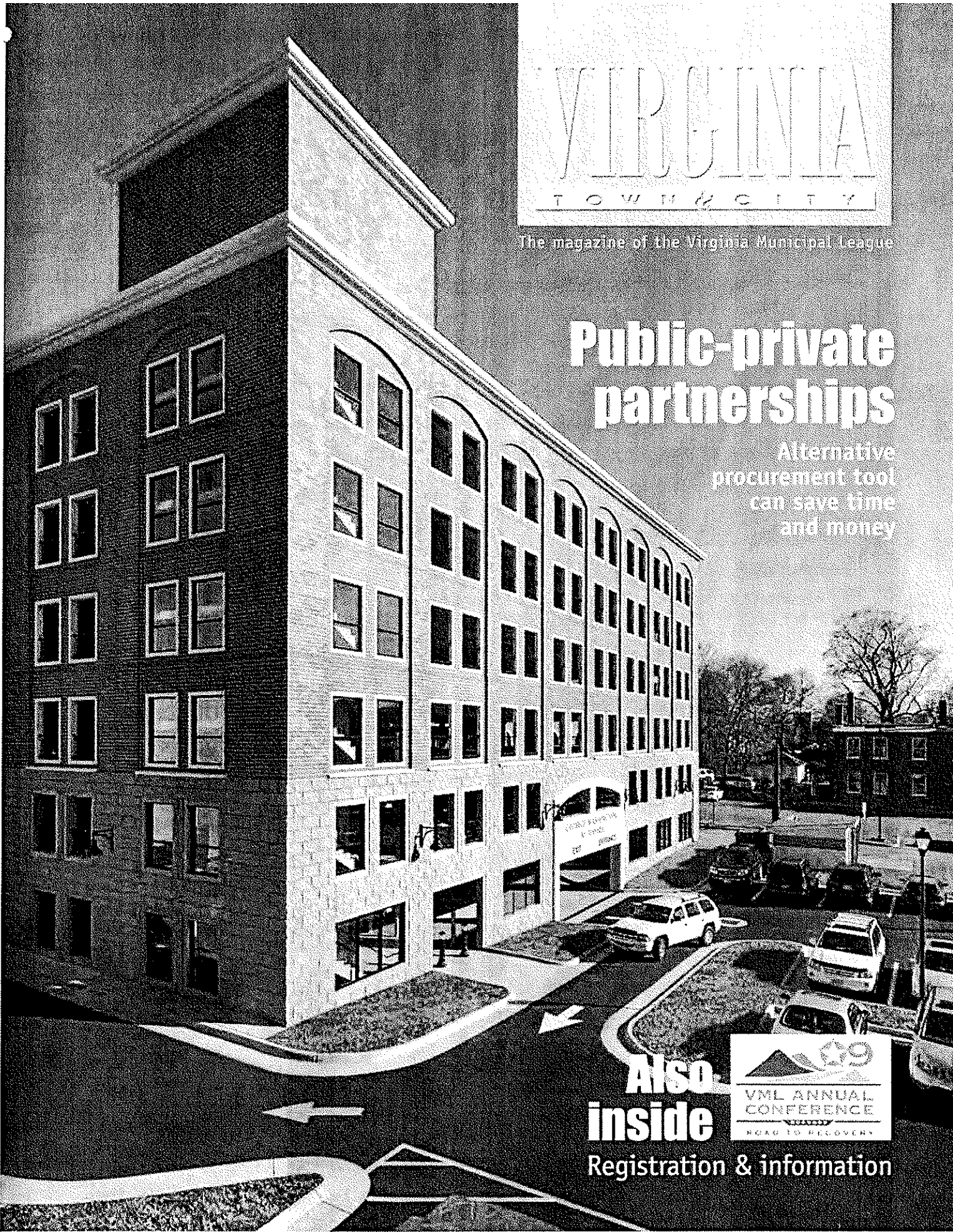
Gantt _____
Simpson _____

VIRGINIA TOWN/CITY

The magazine of the Virginia Municipal League

Public-private partnerships

Alternative
procurement tool
can save time
and money



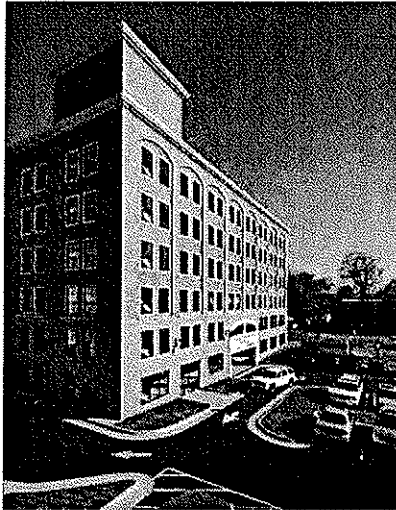
Also
inside



Registration & information



The magazine of the Virginia Municipal League



About the cover

The 530-space George Washington Autopark is a fully automated parking deck located in the newly revitalized Kent corridor area of Winchester. It is the city's fourth parking garage, but its first to be built using the Public-Private Education Facilities and Infrastructure Act process. Photo by Eric Taylor Photography.

Departments

PEOPLE 2

THE CORPORATE PAGE 18

MARKETPLACE 19

CALENDAR..... 21

THE BACK PAGE..... 22

PROFESSIONAL DIRECTORY 23

*Virginia Town & City is printed on recycled paper.
Visit at www.vml.org*

Features

6

**Public-private partnerships:
Virginia's alternative procurement tool**

Public-private partnerships are one way in which private sector expertise can be brought to bear on public projects. While just one tool in the local government procurement toolbox, the partnerships can yield compelling results given the right qualifying project and an experienced, committed partner. *Virginia Town & City* takes a look at PPPs and the role they played in the City of Winchester constructing a new parking garage.

By Kathy Moore



10

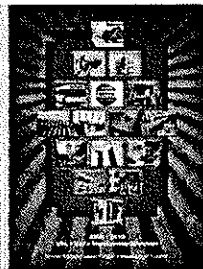
**Plan now to attend
2009 VML Annual Conference in Roanoke**

Yes, these are tough economic times, but the 2009 VML annual conference is one event that you won't want to miss. Conference attendees will get more than their money's worth out of this meeting, which will focus on economic recovery, as well as initiatives that will save communities money and encourage development.

17

2009-2010 VML-VACo Membership Directory on sale

Copies of the 2009-2010 VML-VACo Membership Directory are on sale. Each VML member local government were shipped one copy free. Additional copies are \$40, which includes shipping. An order form is included in this issue of *Virginia Town & City*.



Public-private partnerships: Virginia's alternative procurement tool

How Winchester saved time and money on a new parking garage

ACROSS VIRGINIA, local governments are being challenged to operate more efficiently and cost-effectively. Public needs are rising, while local revenues continue to slide or remain stagnant. Powerful economic and social forces are influencing the way business is done, and as a result, procurement practices have evolved to reflect new economic realities.

Gov. Tim Kaine encourages the private sector and local governments to think strategically about how they can serve citizens better. Public-private partnerships (PPP) are one way in which private sector expertise can be brought to bear on public projects. PPP is simply an additional tool in the procurement toolbox; it is not a panacea for local governments. However, it is increasingly clear that given the right qualifying project and an experienced, committed partner – PPP can yield compelling results.

What is a public-private partnership (PPP)?

In 2002, Virginia formally enacted the Public-Private Education Facilities and Infrastructure Act (PPEA.) The statute creates a way for the public and private sector to work together as partners to meet the needs of both parties. Technically, the act grants responsible public entities the authority to create public-private partnerships for the development of needed projects. The public entity must determine that private involvement may provide the project to the public in a timely or cost-effective fashion. For qualifying projects, PPEA allows private entities to “acquire, design, construct, improve, renovate, expand, equip, maintain or operate” public facilities.

By **KATHY MOORE**

Interestingly, Virginia is one of just a handful of states that offer public-private partnership model procedures.

This non-traditional procurement method has multiple names: PPEA, PPP and P3 are most common.

How does it work?

The advantages of the public-private partnership arrangement over traditional procurement methods are that PPEA provides more financing flexibility, project costs may be lower, projects may be faster to implement, and PPEA's design/build option may offer a more collaborative process.

Essentially, the private sector can submit unsolicited proposals to any agency, institution, or locality in the Commonwealth. Prior to soliciting or accepting an unsolicited PPEA proposal, the public reviewing agency must adopt local policy guidelines. It is up to the public entity to determine if there is a demonstrated need for the project, whether the public-private partnership offers an effective way to put the project in place, and whether to reject the proposal or accept it for further review and consideration. To reduce frivolous unsolicited proposals, the public agency charges a hefty review fee (a minimum of \$5,000 up

to a maximum of \$50,000.)

Proposers follow a two-step process. In the initial phase, called the Conceptual Phase, the public entity reviews proposals for:

- Qualifications and experience;
- project characteristics;
- project financing;
- anticipated public support or opposition;
- project benefit and compatibility;
- any additional relevant information.

If a proposal is approved for further consideration, the public entity

requests the proposer to provide a more detailed proposal, called the Detailed Phase. The same six categories are reviewed but in much greater detail, in order to select one or more proposers to move up to a Comprehensive Agreement.

George Washington Autopark project team

The City of Winchester's Parking Authority partnered with Shockey-WPA, LLC, whose member company is Howard Shockey & Sons, Inc., one of Virginia's largest and oldest building contractors. Shockey specializes in construction management, preconstruction services, design build, public-private partnerships, and general contracting. Other team members included Shockey Precast, Design Concepts, Inc. and Blue Ridge Design.

Which projects qualify?

Most types of public ventures can qualify. The statute states that “any facility or land improvement that meets a public purpose and is developed or operated by or for any public entity.” The majority of Virginia's PPEA projects fall into the following categories:

- Education facilities (public school and higher education);

- infrastructure improvements;
- public safety buildings;
- utility, telecommunications, and information technology;
- recreational facilities.

It's important to keep in mind that there must be a genuine need for the project. The public body must determine that this method is "likely to be advantageous" because of the "probable scope, complexity or urgency of the project" or "risk sharing, added value, an increase in funding or economic benefit from the project that would not otherwise be available."

Win-win relationship

The public and private sectors were quick to recognize the win-win potential of a PPP project. The statute provides mutual benefits for all parties. Not only does it streamline procurement (by removing the lengthy public bidding process,) but public facilities can often be designed, developed and placed in service more

efficiently – much as they would be in the private sector.

It comes as no surprise that communities around the state are turning to public-private partnerships to help address their local infrastructure needs. Here is Winchester's story.

Case study: Winchester's new parking garage

The 530-space George Washington Autopark is a fully automated parking deck located in the newly revitalized Kent corridor area. It is the city's fourth parking garage, and its first to be built using the PPEA process.

The Winchester Parking Authority recently completed this seven-story parking structure through a public-private partnership or PPEA agreement with Shockey-WPA, LLC (whose member company is Howard Shockey & Sons, Inc. one of the state's oldest and largest general contractors.)

Background and timeline

Shockey submitted an unsolicited PPEA proposal to Winchester's Parking Authority to build a parking deck in 2005. In 2007, the parking authority selected Howard Shockey & Sons to enter into a Comprehensive Agreement for design/build services. In 2008, construction began.

"We were certainly interested when we received Shockey's proposal," said Jim Deskins, Winchester's director of economic redevelopment. "With a traditional procurement process, there is an upfront design cost. For us to go out and hire a team, it can really get time consuming and costly."

Deskins recalled that prior to receipt of Shockey's unsolicited proposal, Winchester had authorized a \$9 million bond issue to pay for a future parking structure, with the goal of providing at least 450 additional parking spaces. "We planned to



The 530-space, fully automated George Washington Autopark deck in Winchester was built using a public-private partnership. Photo by Eric Taylor Photography.

budget \$9 million, but there are so many variables with the traditional procurement method, that we don't know what the final price would have been," Deskins said.

With the PPEA, Shockey offered a guaranteed price with no possibility of change orders. Unlike with a traditional design-bid-build, the city could take advantage of a design/build arrangement. The design/build process is inherently efficient as it reduces the delivery schedule by overlapping the design phase and construction phase. It also fosters a more collaborative process; contractor Howard Shockey & Sons could offer insight into innovative construction techniques very early on. Ned Cleland, president of Blue Ridge Design (the structural engineer on the project) recalled, "There was a lot of interaction between the city, the stakeholders and the building team. As partners, we all understood project goals and objectives and we pledged to deliver the best result for the best value."

Was it a success? The numbers speak for themselves. By using a PPEA agreement instead of a traditional procurement method, Winchester was able to put the project on a fast track, build more spaces, and reduce costs. Although \$9 million had been budgeted, Shockey delivered the project for just \$7.68 million, with 80 extra parking spaces.

WINCHESTER STAR



Use of a PPEA agreement put the project on a fast track and saved the city money.

Project statistics

The 530-space garage has five main parking levels, with additional parking on the basement and roof level. It is located on city-owned land between the Frederick County Office Building and the recently rehabilitated George Washington Hotel. At least 90 spaces are reserved for county government employees, who walk across a sky bridge from the fourth level of the parking deck to the county government building.

Approximately 20 spaces are reserved for The George Washington Hotel. The remainder of the space is for daily users.

The garage is fully automated with two pay stations, and there is no attendant. The city hopes to recoup the construction cost of the garage over the next 30 years, using revenue produced by the garage itself. The building also provides 1,000 square feet of office space on street level for three city departments: the Old Town Development Board, the Parking

Authority and the Office of Economic Redevelopment.

PPP encourages innovative construction techniques

"We were always looking for creative solutions," said Jeff Boehm, vice president of Howard Shockey & Sons, Inc. "Our design and construction team worked collaboratively with the city to deliver a great value. We all recognized this was a pivotal project, one that could serve as a further catalyst for the area's revitalization."

The PPP arrangement allowed Shockey to come to the table as a partner rather than as a bidder (when it is usually too late to recommend improvements.)

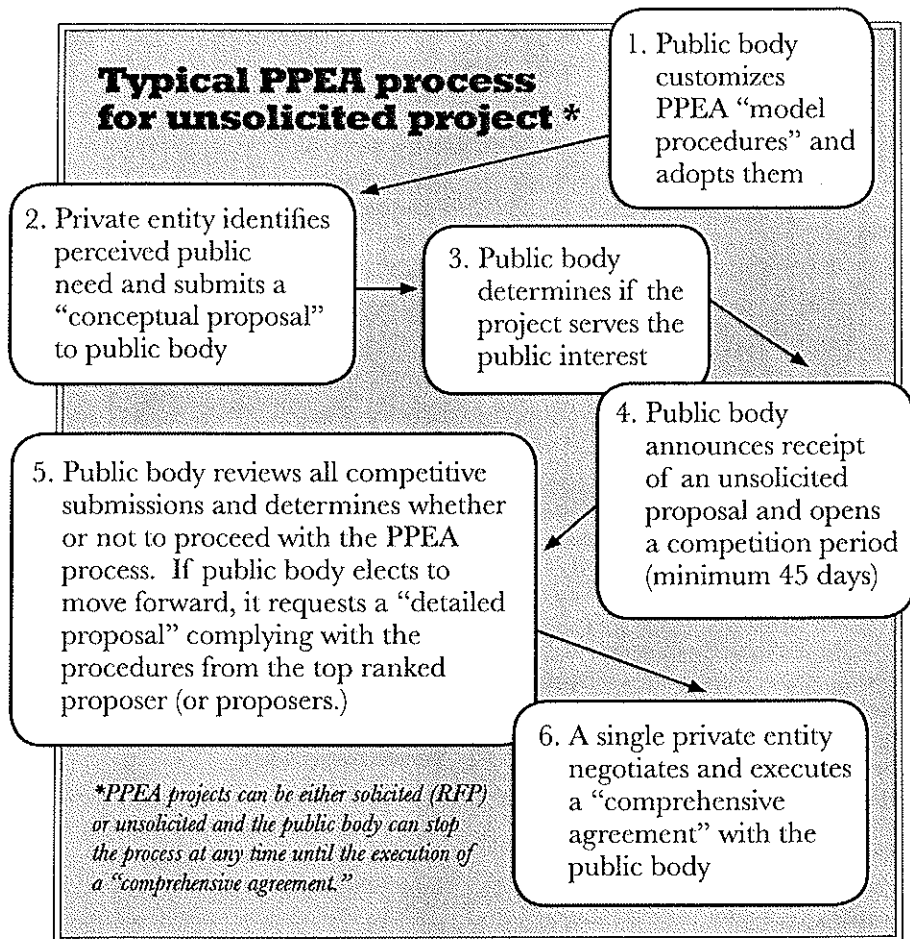
"PPEA gave us the flexibility to better meet Winchester's needs through frank discussion of innovative construction solutions," Boehm said.

For example, Howard Shockey utilized a precast construction technique to embed the façade. Concrete was poured into a fiberglass form liner that was already lined with thin set bricks. In this way, the cladding for the façade went up as the precast panels were erected. Two colors of precast were used to respond to Winchester's architectural context; a buff color mimics mortar bonds between bricks, and on the lower floors a limestone color was used to produce the appearance of a stone faced foundation. This approach provided a cost effective way for the

Examples of recent PPP projects around the state

- City of Winchester – new parking deck
- City of Fredericksburg – wastewater treatment facility improvements
- Town of Christiansburg – new aquatic center
- City of Manassas Park – new parks and recreation facility
- City of Richmond – Richmond Performing Arts Center
- City of Roanoke – new police academy
- City of Chesapeake – new community services board building
- City of Falls Church Public Schools – new middle school

Typical PPEA process for unsolicited project *



garage's exterior appearance to echo the architectural aesthetic of Winchester's historic district. "Preserving and extending the integrity of the historic downtown district had been a goal since day one," Boehm said.

A second innovative construction process involved the placement of carbon fiber directly into the precast decking units. Just as carbon fiber is used to lighten aircraft frames, it was used to lighten the concrete frame of the parking deck. Because the carbon fiber is relatively flexible, it was placed in the concrete by machine, saving labor cost and effort.

Over time, Winchester's garage should require less maintenance than other parking garages because Shockey made sure the floor of the parking deck is composed of parts that do not rust. While the bulk of the reinforcing is made up of carbon fiber, any metal not fully embedded in the concrete is stainless steel. Both the carbon fiber and the stainless steel are non-corrosive, thus eliminating what is

often a parking garage owner's biggest maintenance headache – problems relating to corrosion.

"Backing up to a macro level, Winchester's new garage does something even more significant," Cleland said. "It doesn't look like a conventional parking structure filled with horizontal beams and vertical columns. Instead, this parking deck was designed to look like an old industrial building, with walls and punched openings for windows." Via the partnership between the city and the design/build team, project members worked together to achieve this effect. "We were all in together; our motivation wasn't to provide the lowest bid – our motivation was to deliver the best project possible for the best value. And that's what we did," Cleland said.

Lessons learned: Pick your partner carefully

If a locality elects to move forward with a PPP project, it's important to remember that it is entering a

long-term relationship. It is critical to select a partner wisely. The public entity must verify the proposer's experience, longevity and financial capacity. A reviewing agency must be very comfortable with the proposer's reputation for product and delivery.

As for his partner of choice, Jim Deskins knew exactly what he was getting. "Shockey has been in business since 1896, they have a great reputation, and they are very familiar with PPEA projects," he said. The Shockey Companies' long track record with parking garage construction (they've been involved in more than 100 parking facilities) also helped.


"I think it boils down to experience, good communication and trust," said Deskins when asked about choosing a partner.

Conclusion

By adopting PPEA legislation at the local level (as the Winchester Parking Authority did back in 2003) communities can proactively take a step towards expanding their procurement toolkit.

"Via our partnership with Howard Shockey & Sons, Winchester was able to accomplish more than if we were acting alone," Deskins said. "Not only did we get our fourth downtown garage built ahead of schedule, we also realized valuable cost savings."

The PPEA legislation is still fairly new. There is no formal tracking system, though experts suggest that upwards of 100 projects across the state have already been financed using PPEA or PPP model guidelines. While the trend towards public-private partnerships seems to be getting hotter, it is still not a good fit for every project. "PPEA is not *the* answer, but *an* answer," said some of the people most familiar with the process.

It's probably a safe bet, given the success of recent PPP projects such as Winchester's new garage, that Virginia may be heading toward a new era of public-private cooperative agreements. 

About the author

Kathy Moore writes about economic development, design and revitalization in Virginia's historic communities.



County of Prince Edward
Board of Supervisors
Agenda Summary

Meeting Date: June 8, 2010
Item No.: 34
Department: County Administration
Staff Contact: W.W. Bartlett/Sarah Puckett
Issue: Monthly Reports - ADDENDUM

Summary:

Attachments:

- a. Prince Edward County Public Schools

Recommendation: None.

Motion _____
Second _____

Campbell _____
Jones _____
Wilck _____

Fore _____
McKay _____
Wiley _____

Gantt _____
Simpson _____

**Prince Edward County Public Schools
Summary Financial Report**

Fund I
Month Ending **May 31, 2010**

(rounded to nearest dollar)

<u>Revenues</u>	<u>Current Month</u>	<u>Year to Date</u>	<u>Budget</u>	Variance Actual Under (Over) <u>Budget</u>	YTD as a Percent of <u>Budget</u>
From the Commonwealth:					
State Sales Tax.....	\$ 223,035	\$ 2,303,622	\$ 2,687,309	\$ 383,688	85.72
Basic School Aid.....	\$ 568,843	\$ 6,840,482	\$ 7,886,187	\$ 1,045,705	86.74
All Other.....	\$ 829,524	\$ 5,808,995	\$ 6,801,017	\$ 992,022	85.41
Total State.....	\$ 1,621,403	\$ 14,953,098	\$ 17,374,513	\$ 2,421,415	86.06
From the Federal Gov't.....	\$ 235,153	\$ 1,889,935	\$ 2,887,857	\$ 997,922	65.44
Tran. From General Fund(County)	\$ 149,653	\$ 4,440,986	\$ 7,968,567	\$ 3,527,581	55.73
Cash Book -Local.....	\$ 120,921	\$ 436,590	\$ 376,000	\$ (60,590)	116.11
Total Revenues.....	\$ 2,127,130	\$ 21,720,608	\$ 28,606,937	\$ 6,886,329	75.93

<u>Expenditures</u>	<u>Current Month</u>	<u>Year to Date</u>	<u>Outstanding Encumbrances</u>	<u>Budget</u>	Expended & Encumbered (Over) Under <u>Budget</u>	Expen. & Encumbrance as a % of <u>Budget</u>
1000-Instruction.....	\$ 1,777,861	\$ 16,647,805	\$ 4,446,047	\$ 22,198,323	\$1,104,471	95.02
2000-Admin.,Health/Att.....	\$ 111,065	\$ 1,213,890	\$ 234,480	\$ 1,513,618	\$65,248	95.69
3000-Transportation.....	\$ 117,993	\$ 1,398,351	\$ 453,029	\$ 1,928,199	\$76,819	96.02
4000-Operation/Maintenance	\$ 114,957	\$ 1,530,667	\$ 355,949	\$ 1,968,450	\$81,834	95.84
5000-Food Service.....	\$ 897	\$ 8,798	\$ 897	\$ 10,580	\$885	91.63
6000-Facilities.....	\$ 4,357	\$ 76,168	\$ 52,997	\$ 137,725	\$8,559	93.79
7000-Debt. Ser.....	\$ -	\$ 844,929	\$ 5,113	\$ 850,042	\$0	100.00
8000-Contingency Reserve		\$ -	\$ -	\$ -	\$0	0.00
Total Expenditures.....	\$ 2,127,130	\$ 21,720,608	\$ 5,548,511	\$ 28,606,937	\$1,337,817	95.32

Saved as May 09-10 MonthRept

Prince Edward County Public Schools
 35 Eagle Drive
 Farmville, Virginia 23901

**Comparative Receipts and Expenditures
 Year to Date**

Month of May 10

Receipts:	Fiscal 2009			Fiscal 2010			Diff.
	Budgeted	Rec. YTD	Percent	Budgeted	Rec. YTD	Percent	
Sales Tax	3,083,012	2,614,389	84.80	2,687,309	2,303,622	85.72	-0.92
Basic Aid	8,858,101	7,937,355	89.61	7,886,187	6,840,482	86.74	2.87
Other State	6,128,154	5,293,884	86.39	6,801,017	5,808,995	85.41	0.97
Total State	18,069,267	15,845,628	87.69	17,374,513	14,953,098	86.06	1.63
Federal Funds	2,403,092	1,624,368	67.59	2,887,857	1,889,935	65.44	2.15
Local Funds	8,077,457	4,977,902	61.63	7,968,567	4,440,986	55.73	5.90
Cash Book	375,100	388,953	103.69	376,000	436,590	116.11	#####
Total Revenue	\$28,924,916	\$22,836,851	78.95	\$28,606,937	\$21,720,608	75.93	3.02

Expenditures:	Fiscal 2009			Fiscal 2010			Diff.
	Budgeted	Expended YTD	Percent	Budgeted	Expended YTD	Percent	
Instruction	22,106,881	17,422,617	78.81	22,198,323	16,647,805	75.00	3.82
Administration	1,590,575	1,288,966	81.04	1,513,618	1,213,890	80.20	0.84
Transportation	2,026,900	1,355,802	66.89	1,928,199	1,398,351	72.52	-5.63
Maintenance	2,045,650	1,765,063	86.28	1,968,450	1,530,667	77.76	8.52
Food Service	10,158	6,389	62.90	10,580	8,798	83.16	#####
Facilities	185,820	48,368	26.03	137,725	76,168	55.30	#####
Debt Service	958,932	949,647	99.03	850,042	844,929	99.40	-0.37
Contingency Reserves	0	0	0.00	0	0	0.00	0.00
Total Expenditures	\$28,924,916	\$22,836,851	78.95	\$28,606,937	\$21,720,608	75.93	3.02

Saved as May 09-10 Expense Compare

Prince Edward County Public Schools
Food Service Department
Summary Financial Report
2009 - 2010

Fund 4
Month Ending May 31, 2010

(rounded to nearest dollar)

<u>Revenues</u>	<u>Current Month</u>	<u>Year to Date</u>	<u>Budget</u>	<u>Variance Actual Under (Over) Budget</u>	<u>YTD as a Percent of Budget</u>
From the Commonwealth:					
State School Food	\$ 7,343	\$ 57,119	\$ 80,521	\$ 23,402	70.94
School Breakfast	\$ -	\$ -	\$ 2,124	\$ 2,124	
Total State.....	\$ 7,343	\$ 57,119	\$ 82,645	\$ 25,526	69.11
Federal Reimbursement	\$ 75,014	\$ 664,267	\$ 750,000	\$ 85,733	88.57
Cash Book -Local.....	\$ 19,833	\$ 229,636	\$ 259,611	\$ 29,975	88.45
Total Revenues.....	\$ 102,190	\$ 951,021	\$ 1,092,256	\$ 141,235	87.07

<u>Expenditures</u>	<u>Current Month</u>	<u>Year to Date</u>	<u>Outstanding Encumbrances</u>	<u>Budget</u>	<u>Expended & Encumbered (Over) Under Budget</u>	<u>Expen. & Encumbrance as a % of Budget</u>
Salary	\$ 29,608	\$ 324,143	\$ 51,872	\$ 399,089	\$ 23,073	94.22
Fringe Benefits	\$ 9,867	\$ 113,301	\$ 18,426	\$ 136,945	\$ 5,218	96.19
Purchased Services	\$ 917	\$ 19,610	\$ 617	\$ 20,227	\$ -	100.00
Travel	\$ -	\$ -	\$ -	\$ -	\$ -	0.00
Materials & Supplies	\$ 5,825	\$ 40,193	\$ 981	\$ 91,239	\$ 50,065	45.13
Food Supplies	\$ 35,498	\$ 348,662	\$ 36,230	\$ 436,756	\$ 51,864	88.13
Uniforms	\$ -	\$ -	\$ -	\$ -	\$ -	0
Furniture/Equipment	\$ -	\$ 1,853	\$ -	\$ 8,000	\$ 6,147	23.16
		\$ -	\$ -	\$ -	\$ -	-
Total Expenditures.....	\$ 81,715	\$ 847,762	\$ 108,127	\$ 1,092,256	\$136,367	87.52

Saved as May 09-10 summary financial food service

Prince Edward County Public Schools

2009 - 2010
 Comparative Receipts and Expenditures
 Food Service Department
 Year to Date
 Month of May 2010

Receipts:	Fiscal 2009				Fiscal 2010			
	Budgeted	Rec. YTD	Percent	Diff.	Budgeted	Rec. YTD	Percent	Diff.
State School Food	13,408	13,304	99.22	-28.28	80,521	57,119	70.94	-28.28
School Breakfast	0	10,939	0.00	0.00	2,124	0	0.00	0.00
Total State	13,408	24,242	180.80	-111.69	82,645	57,119	69.11	-111.69
Federal Reimbursement	787,392	638,514	81.09	7.48	750,000	664,267	88.57	7.48
Cash Book - Local	285,000	231,518	81.23	7.22	259,611	229,636	88.45	7.22
Total Revenue	\$1,085,800	\$894,274	82.36	4.71	\$1,092,256	\$951,021	87.07	4.71
Expenditures:	Budgeted	Expended YTD	Percent	Diff.	Budgeted	Expended YTD	Percent	Diff.
Salary	415,296	349,260	84.10	-2.88	399,089	324,143	81.22	-2.88
Fringe Benefits	167,883	139,686	83.20	-0.47	136,945	113,302	82.74	-0.47
Purchased Services	24,200	20,924	86.46	10.48	20,227	19,610	96.95	10.48
Travel								
Materials & Supplies	110,032	45,529	41.38	2.67	91,239	40,193	44.05	2.67
Food Supplies	352,389	299,311	84.94	-5.11	436,756	348,662	79.83	-5.11
Uniforms	0	0	0.00	0.00	0	0	0.00	0.00
Furniture/Equipment	16,000	6,876	42.98	-19.81	8,000	1,853	23.16	-19.81
Contingency Reserves								
Total Expenditures	\$1,085,800	\$861,586	79.35	-1.73	\$1,092,256	\$847,762	77.62	-1.73