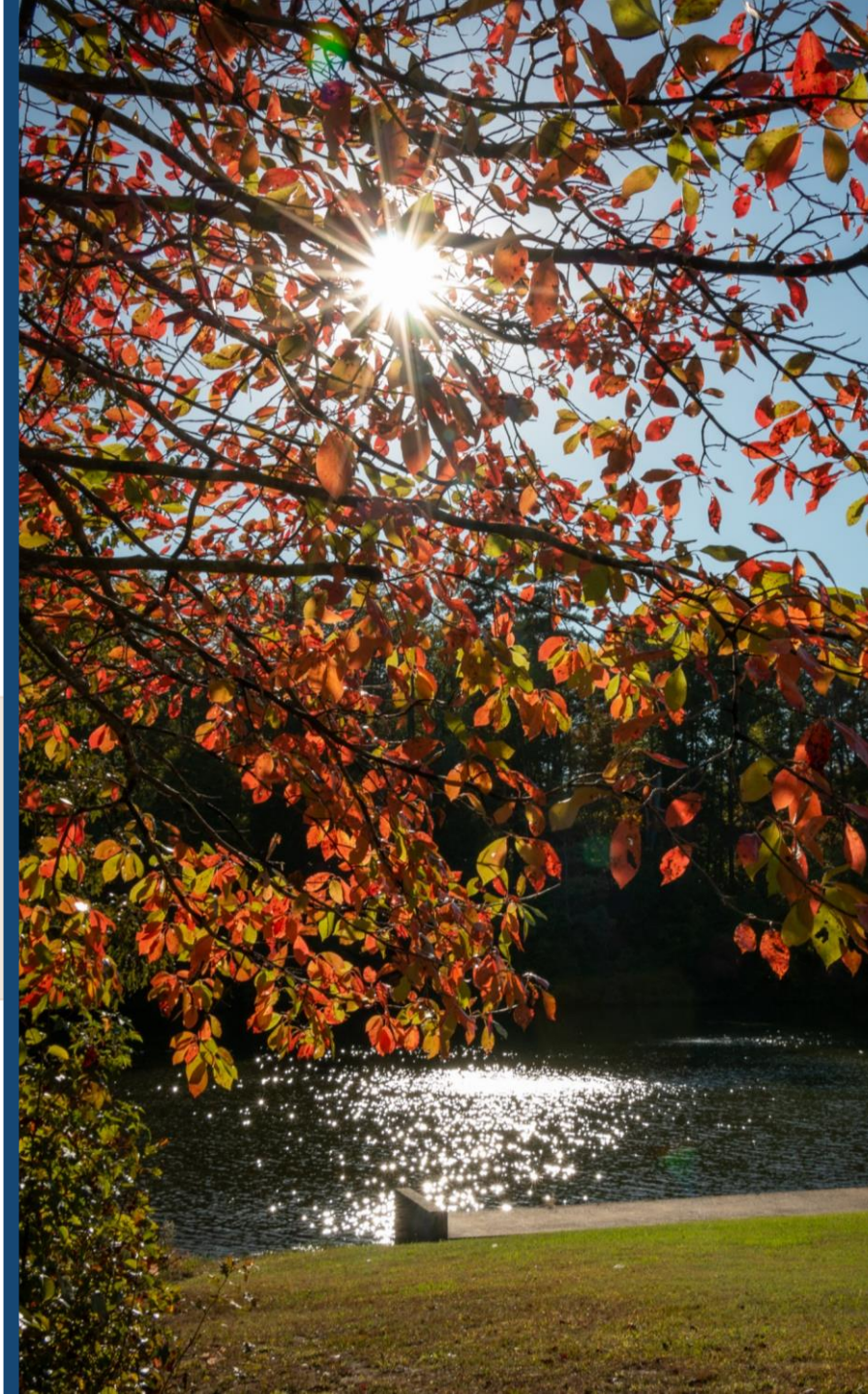







# Prince Edward County Comprehensive Plan Update

Public Workshop | 11.16.23 | 12.13.23



# Tonight's Workshop

---

-  What is a Comprehensive Plan?
-  What is the Update Process and How Can You Be Involved?
-  Visual Preference Survey
-  Your Perspective: Group Exercises
-  Wrap Up



# What is a Comprehensive Plan?

---

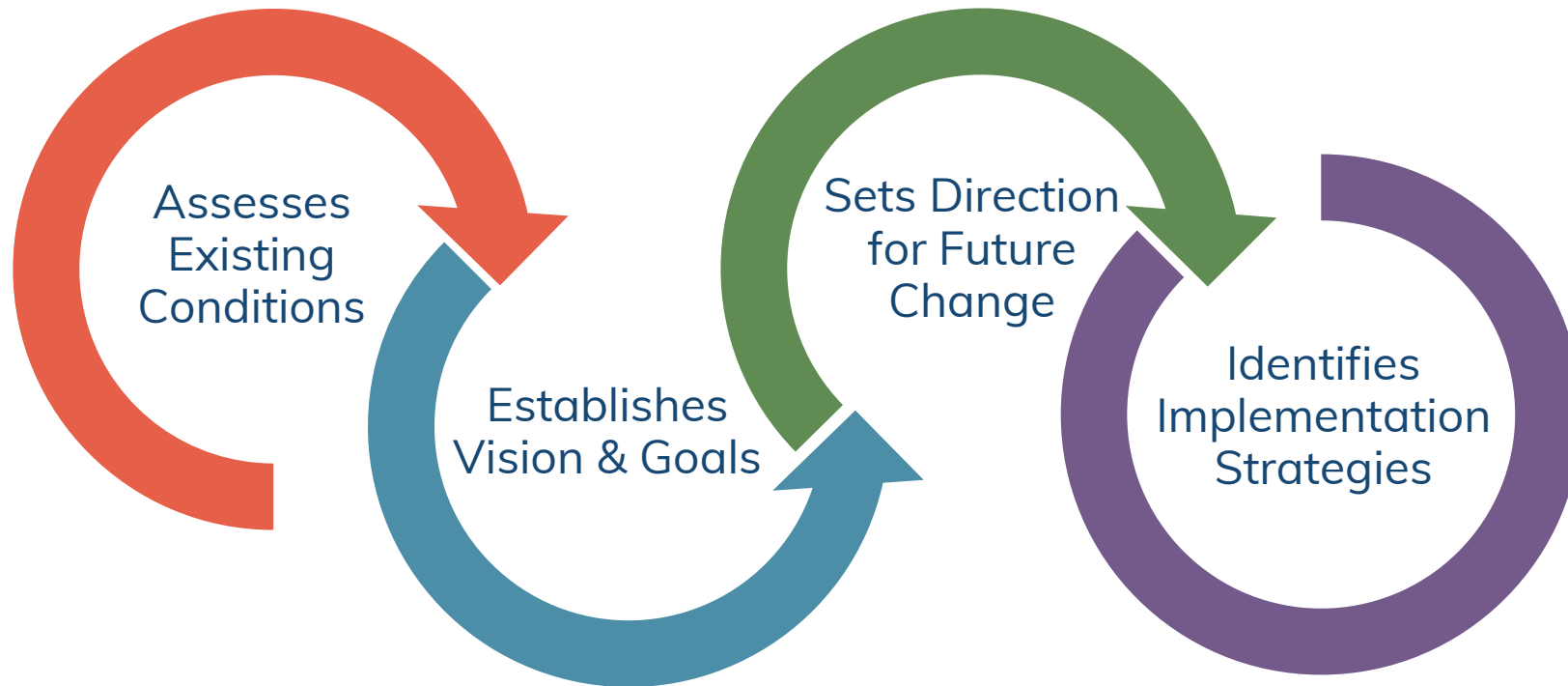
# What is a Comprehensive Plan?\*

- ❑ A long-range planning document and decision-making guide
- ❑ A community-guided vision for the future
- ❑ A showcase of assets and areas for improvement
- ❑ The guiding framework for the community's planning tools: Zoning Ordinance, Subdivision Ordinance, Capital Improvements Program, and other plans/studies
- ❑ A legally required document by § 15.2-2223 of the Code of VA

*\*See BG Guide to Comprehensive Planning*

# What Does a Comprehensive Plan Do?

---



# What Does a Comprehensive Plan Address?



Land Use

Natural & Cultural Resources

Housing

Economic Development

Community Facilities & Services

Transportation

# Why Update a Comprehensive Plan?

---

- ❑ Local priorities & vision change with time
- ❑ The natural & built environment change with time
- ❑ Strategies to achieve the plan's vision & goals must be updated & adjusted
- ❑ Five-year review **legally required** by § 15.2-2223 of the Code of VA



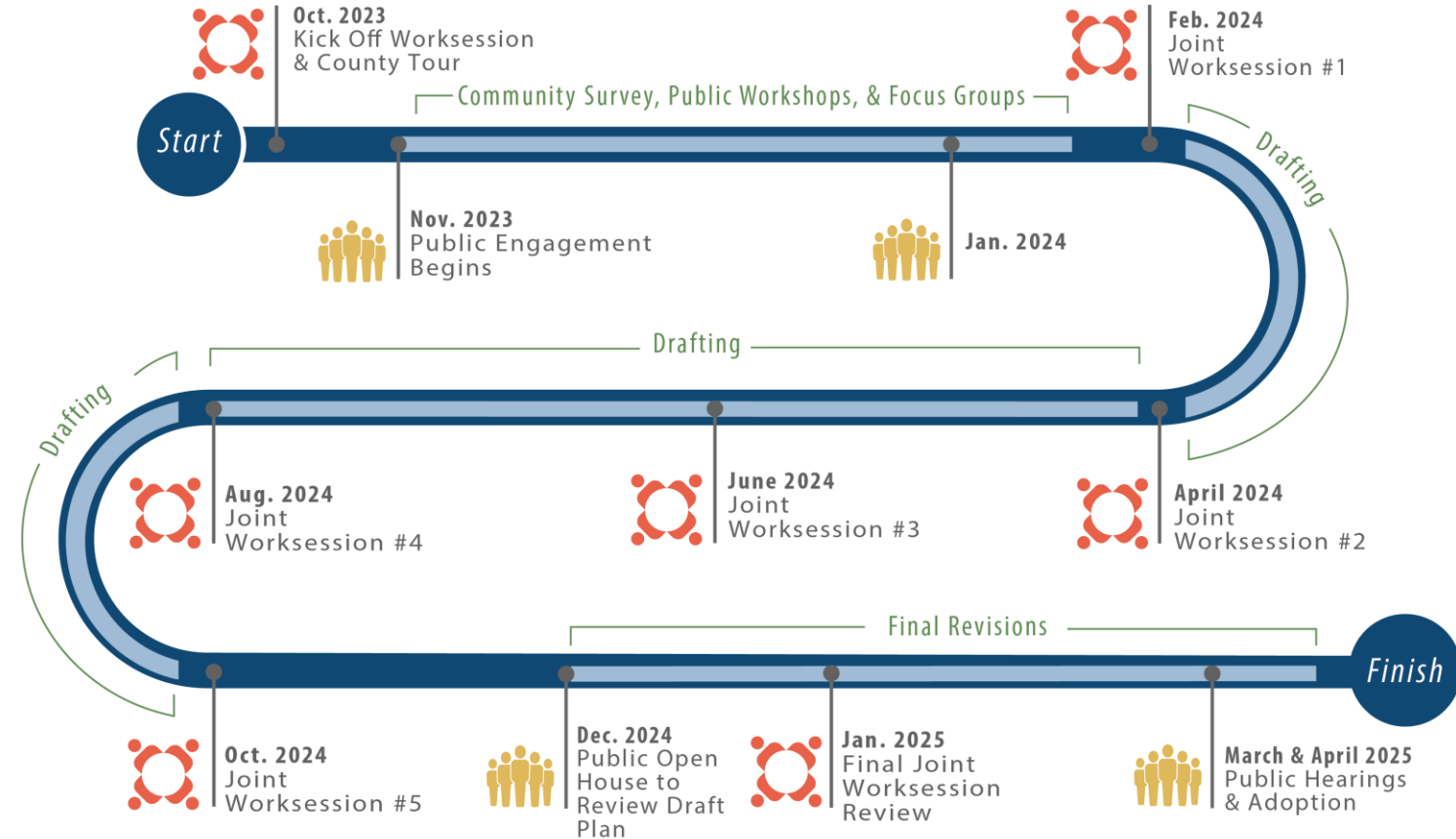
# What is the Update Process?

---



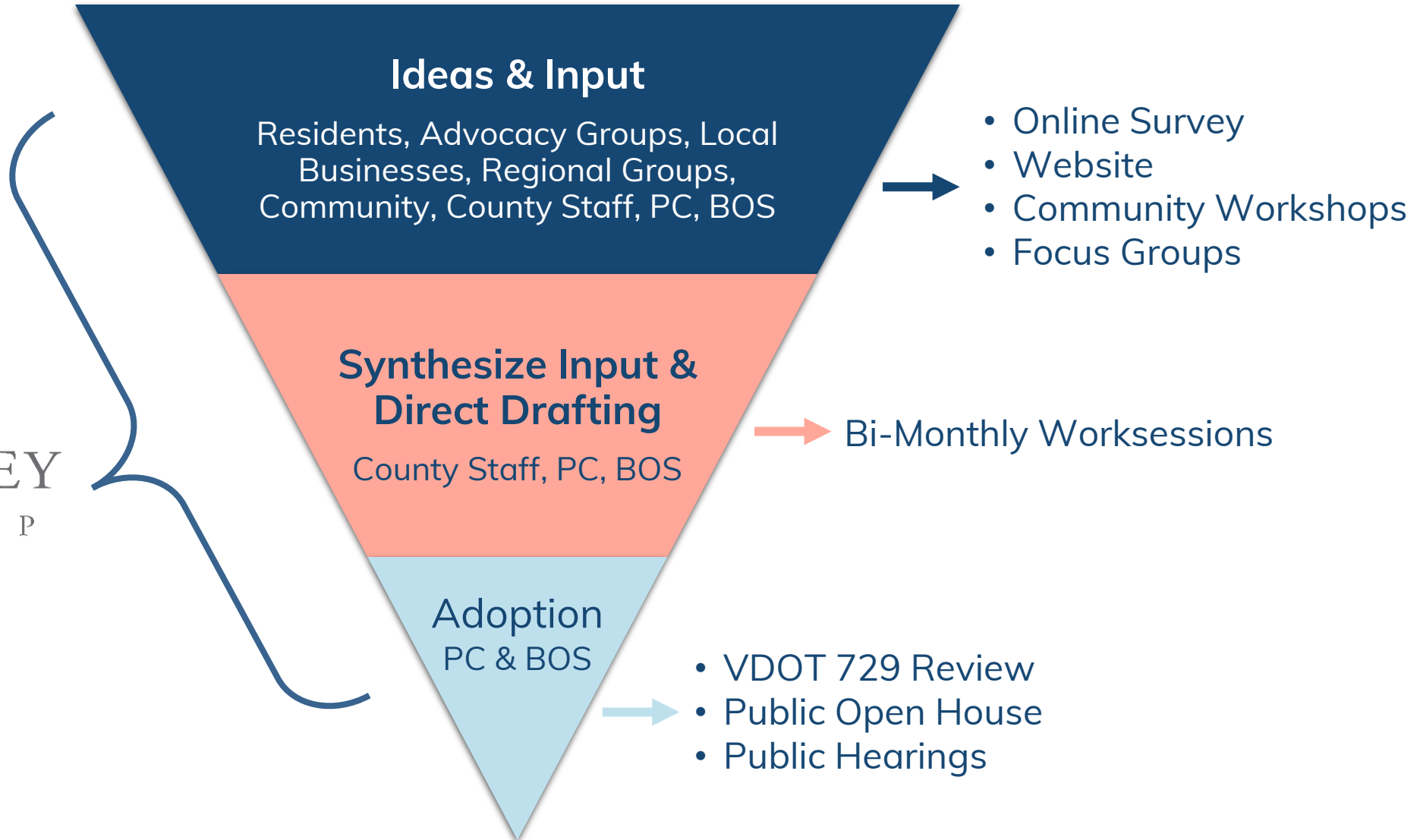
# What are the Steps to Update the Plan?\*

- ✓ Diagnostic of Current Plan
- ▶ Community Engagement
- ▶ Update Existing Conditions Data
- ▶ Develop Vision & Goals
- ▶ Draft Plan Content
- ▶ Craft Strategies & Implementation Steps
- ▶ Plan Review & Edits
- ▶ Plan Adoption



*\*Schedule subject to change.*

# Who is Involved?



# How can YOU be involved?



Take the online survey – open NOW thru Dec. 31!



Attend Public Workshops!

➤ Know someone who couldn't make it tonight?  
Next Chance: Dec. 13 @ Moton Museum

SCAN  
HERE!



Visit the County's website and social media for updates and draft materials



Stay tuned for additional engagement opportunities!

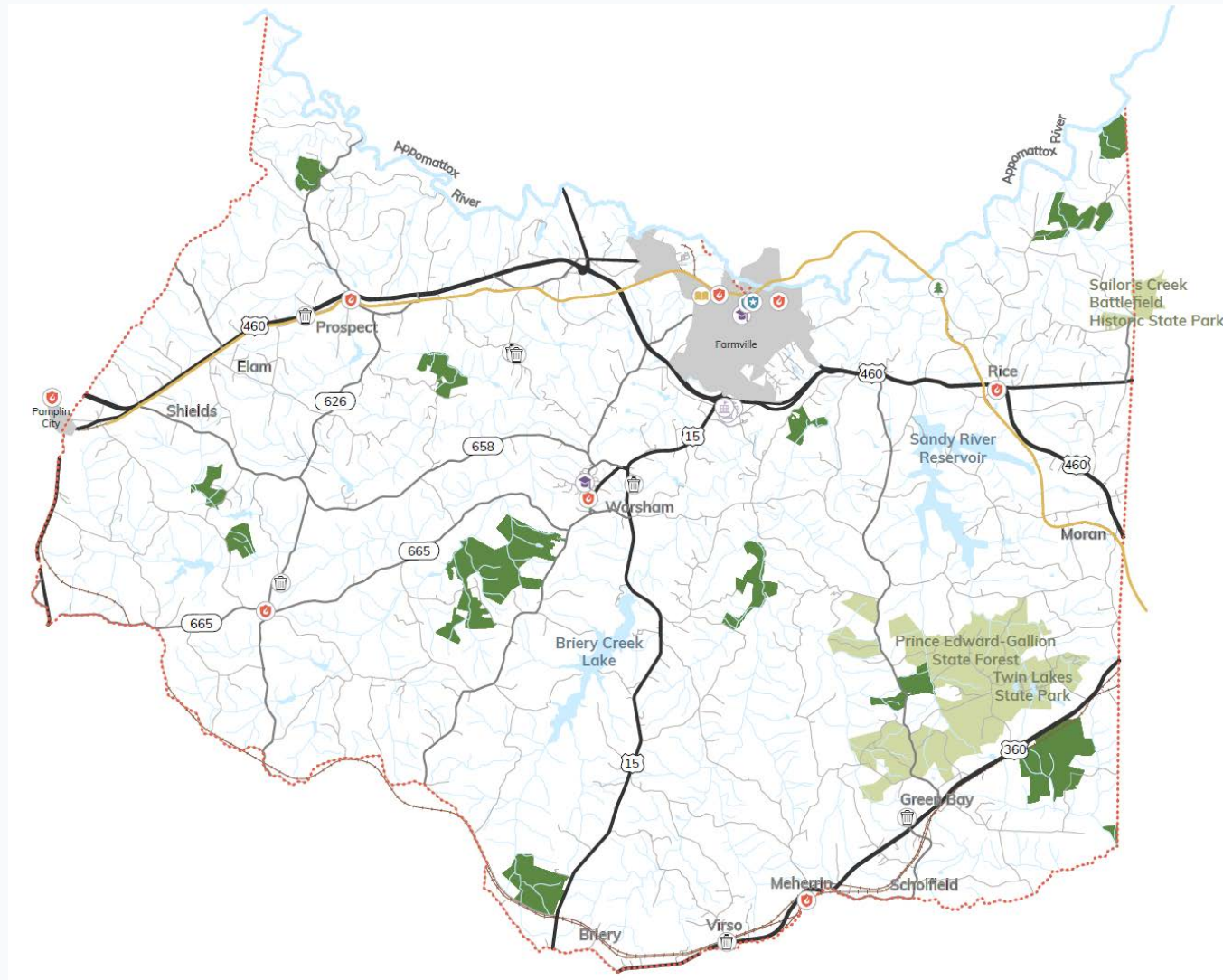


# Visual Preference Survey

---

# 1. Where are you coming from tonight? Click to drop a pin!

0



## 2. Rural Residential

0



Love it / it fits perfectly in Prince Edward

0%

Like it / it's a good fit for Prince Edward

0%

Neutral / no preference

0%

Not my favorite, but could work somewhere in Prince Edward

0%

Don't like it / not a good fit in Prince Edward

0%

### 3. Rural Suburban Neighborhood



(A) Love it / it fits perfectly in Prince Edward

0%

(B) Like it / it's a good fit for Prince Edward

0%

(C) Neutral / no preference

0%

(D) Not my favorite, but could work somewhere in Prince Edward

0%

(E) Don't like it, not a good fit in Prince Edward

0%

## 4. Suburban Neighborhood



Love it / it fits perfectly in Prince Edward

0%

Like it / it's a good fit for Prince Edward

0%

Neutral / no preference

0%

Not my favorite, but could work somewhere in Prince Edward

0%

Don't like it, not a good fit in Prince Edward

0%



## 5. Mixed-Use (Residential/Commercial)



Love it / it fits perfectly in Prince Edward

0%

Like it / it's a good fit for Prince Edward

0%

Neutral / no preference

0%

Not my favorite, but could work somewhere in Prince Edward

0%

Don't like it, not a good fit in Prince Edward

0%

# Cluster Subdivisions

**Conventional Site Plan**



**Cluster Site Plan**



*Graphic courtesy of Sympoetica*

6. Traditional neighborhood subdivisions have homes on larger lots with less open green space. Cluster subdivisions have homes on smaller lots with more open green space. Which do you prefer?



Traditional neighborhood subdivisions  
0%

Cluster subdivisions  
0%

Either  
0%

I don't know/no preference  
0%

## 7. For potential medium-to-large solar developments, what qualities of Prince Edward County are most important to protect?



Nobody has responded yet.

Hang tight! Responses are coming in.

8. These are some items that similar communities have identified for protection. How would you rank these in importance from highest to lowest?



Vegetation/trees

Scenic viewsheds

Wildlife corridors

Quiet atmosphere

Rural farmland

## 9. What measures could help reduce the impact of medium-to-large solar developments? Pick your top 2 answers.



- (A) Increased distance from homes and roads 0%
- (B) Landscape/tree buffer 0%
- (C) Fencing 0%
- (D) Site location/elevation 0%
- (E) Other 0%



# Group Exercises

---

# Group Exercises

---

## Let's Get Started!



Appoint a group recorder to fill in the worksheet with your group's answers.



Appoint a group speaker to read out your responses at the end.



Write your group number on the worksheet and map.



# Group Exercise #1

- As a group, discuss and answer Questions 1-3. Take about **10 minutes** per question.



1. Assets/Strengths
2. Weaknesses/Challenges
3. Goals/Improvements

- Include any **additional thoughts and notes** in the space provided.
- Ask questions – **we're here to help!**

# Group Exercise #2

- Each group will be assigned a topic.



1. Growth & Development (p. 5-7)
2. Economy & Workforce Development (p. 8-9)
3. Connectivity & Recreation (p. 10-12)

- **Skip to that section** of this packet, **discuss those questions** as a group, and write **your group answer**.

- Please also **draw on the map** to mark the locations you discuss!



- You only need to complete your assigned section. Take about **10 minutes** per question.

- Ask questions – **we're here to help!**

# Group Exercise Report Out

---

- Report the highlights for your group.
- Be concise & speak clearly!
- **Please turn in** the group exercise packet at the end. We want to remember your answers!!

# How can YOU be involved?



Take the online survey – open NOW thru Dec. 31!



Attend Public Workshops!

➤ Know someone who couldn't make it tonight?  
Next Chance: Dec. 13 @ Moton Museum



SCAN  
HERE!



Visit the County's website and social media for updates and draft materials



Stay tuned for additional engagement opportunities!